

George Latimer
County Executive

Sherlita Amler, M.D.
Commissioner of Health

ATTENTION

Public Health Alert

DATE: February 14, 2020

SUBJECT: **2019 NOVEL CORONAVIRUS (COVID 19)**
NOTIFY WESTCHESTER COUNTY DOH OF POSSIBLE CASES

This is a reminder to follow the attached CDC guidance and to screen patients for travel history. For persons that have returned from mainland China in the past 14 days, confirm that they have been in contact with the Westchester County Health Department and if not please contact the Health Department.

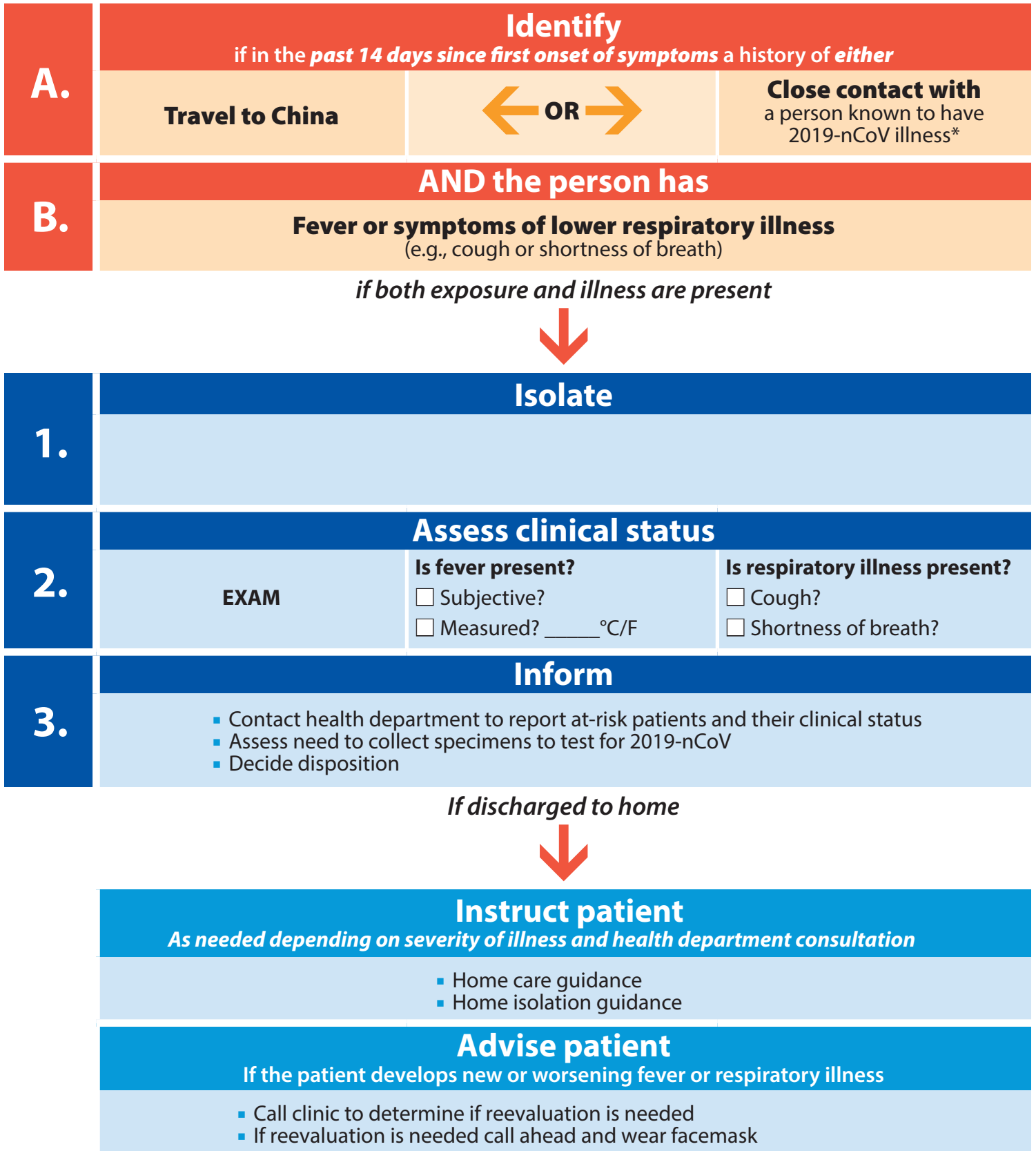
To reach the Westchester County Department of Health (WCDH):

- 914-813-5159 - Business Hours
- 914-813-5000 - After Hours

For symptomatic persons, contact the WCDH. Specimen collection will be determined in collaboration with CDC and NYSDOH.

Flowchart to Identify and Assess 2019 Novel Coronavirus

For the evaluation of patients who may be ill with or who may have been exposed to 2019 Novel Coronavirus (2019-nCoV)



* Documentation of laboratory-confirmation of 2019-nCoV may not be possible for travelers or persons caring for patients in other countries. For more clarification on the definition for close contact see CDC's Interim Guidance for Healthcare Professionals: www.cdc.gov/coronavirus/2019-nCoV/hcp/clinical-criteria.html