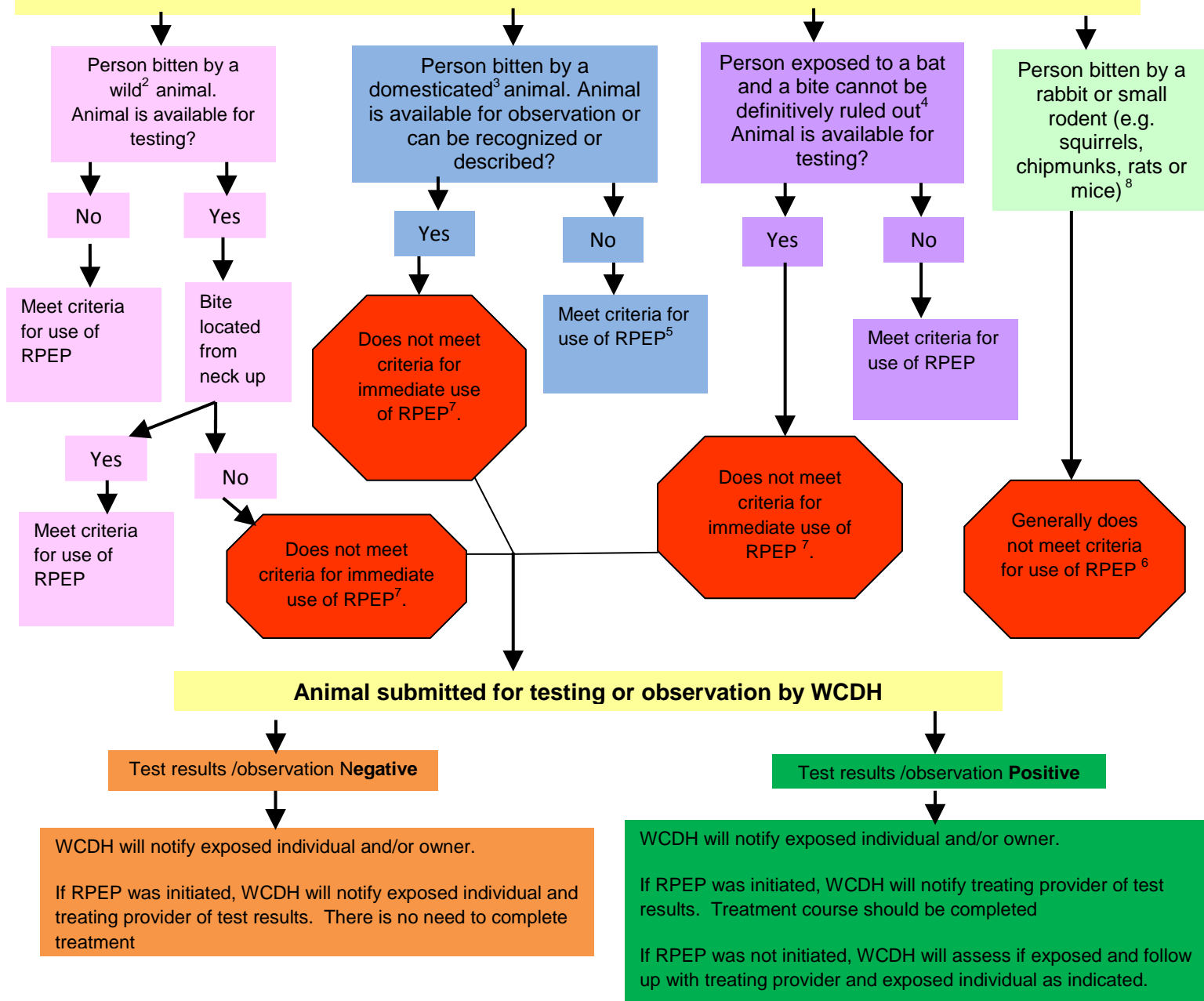


Rabies Post Exposure Prophylaxis (RPEP)¹ Algorithm (Modified)

Complete and fax the Human Rabies Case Investigation and PEP Record to: (914) 813-5182.

The algorithm **MUST** be used in conjunction with the RPEP guidance document

Use the algorithm to determine if meet criteria for use of RPEP are met.



Footnotes

1. Refer to your hospital pharmacist or CDC website for dosing instructions.
2. Wild animals with the highest rabies incidence include raccoons, bats, skunks and foxes.
3. Domesticated animals: dogs, cats, ferrets, horses, donkeys, mules, cattle, sheep, goats and pigs.
4. This includes situations where a bat is found **in the same room** as a sleeping person, unattended child, intoxicated or mentally compromised person
5. General recommendation is to locate the animal for observation on the 10th day. If the exposed individual indicates that they would not be able to recognize the animal, RPEP can be used.
6. For unusual circumstances, contact WCDH.
7. Immediate use of RPEP is not indicated. The decision to use RPEP is deferred pending the outcome of observation/testing.
8. See Rabies PEP Guidance for Medical Providers

*See Rabies PEP Guidance for Medical Providers posted on the WCDH Website under After Hours for additional information.