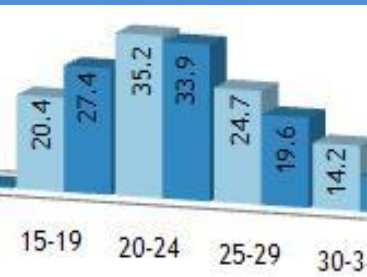


2010

Robert P. Astorino,  
Westchester County Executive  
County Board of Legislators



# Annual Data Book

## Emergency Room Utilization Report

Westchester County Department of Health

Cheryl Archbald, MD, MPH  
Acting Commissioner of Health

Westchester  
gov.com

---

---

<b>Project Director</b>	<b>Jiali Li, Ph.D, Director of Research and Evaluation Renee Recchia, MPH, Acting Deputy Commissioner of Administration</b>
<b>Project Staff</b>	<b>Megan Cea, MPH, Assistant Statistician</b>
<b>Editor</b>	<b>Cheryl Archbald, MD, MPH, Acting Commissioner of Health</b>
<b>Contact</b>	<b>Jiali Li, Ph.D, 914-813-5100 Westchester County Department of Health, Planning and Evaluation 145 Huguenot Street, 8<sup>th</sup> Floor, New Rochelle, New York, 10801</b>

---

---

## FOREWORD

Westchester County Department of Health is the local health department for Westchester County, which is located north of New York City, bordering the Bronx, and covers an area of 450.5 square miles. The Hudson River and Rockland County form Westchester County's western border and Putnam County and the state of Connecticut border Westchester to the north and east, respectively. Westchester County has a population of 949,113 based on 2010 US Census data\*. In 2010, 68.1% of the County's population was white, 14.6% was black, 5.5% was Asian/Pacific Islander, and 11.8% was of mixed or other races. In addition, Hispanics comprised 21.8% of Westchester County's residents.

The mission of the Department of Health is to promote health, prevent disease and prolong meaningful life for Westchester County residents. The Health Department monitors and controls the spread of communicable disease, monitors and regulates air and water quality, enforces the state and local sanitary code, promotes and ensures local public health activities, and assures the availability of community health services.

Starting with the 2010 Annual Data Book, rather than issuing one comprehensive data book, separate topical reports are being released in order to facilitate more timely access to data, such as demographics, vital statistics, cancer, communicable diseases, emergency room visits, and hospitalizations. The individual volumes of the reports will be published at various times upon the availability of data.

\* Because the 2010 US census were not fully available at the time of publication, all data analyses in the Data Book are based on the 2000 US census.



# TABLE OF CONTENTS

Highlights	1
Demographic Characteristics of Emergency Room Clients	2
Age and Sex	2
Race and Ethnicity	4
Payer Source	6
Select Causes of Emergency Room Visits	8
Select Causes of Emergency Room Visits by Sex	10
Select Causes of Emergency Room Visits by Race and Ethnicity	11
Select Causes of Emergency Room Visits by Patient Disposition	12
Emergency Room Visits by Hospital	13
Emergency Room Visits by Hospital and Race and Ethnicity	14
Emergency Room Visits by Hospital and Select Causes	15
Emergency Room Visits by Hospital and Payer	17
Tables	19
Appendices	37

## List of Figures in Text

1	Percentage Distribution of Emergency Room Visits by Age, Westchester County Residents, 2009	2
2	Emergency Room Visit Rates by Age, Westchester County Residents, 2009	2
3	Percentage Distribution of Emergency Room Visits by Age and Sex, Westchester County Residents, 2009	3
4	Emergency Room Visit Rate by Age and Sex, Westchester County Residents, 2009	3
5	Percentage Distribution of Population and Emergency Room Visits by Race, Westchester County	4
6	Emergency Room Visit Rate by Age and Race/Ethnicity, Westchester County Residents, 2009	4
7	Percentage Distribution of Emergency Room Visits by Race, Ethnicity, and Age, Westchester County Residents, 2009	5
8	Percentage Distribution of Emergency Room Visits by Payer Source and Race/Ethnicity, Westchester County Residents, 2009	6
9	Percentage Distribution of Emergency Room Visits by Payer Source and Age, Westchester County Residents, 2009	7
10	Number of Emergency Room Visits Due to Select Causes/Syndromes, Westchester County Residents, 2009	8
11	Number of Emergency Room Visits Due to Select Causes by Sex, Westchester County Residents, 2009	10
12	Percentage Distribution of Emergency Room Visits Due to Select Causes by Race/Ethnicity, Westchester County Residents, 2009	11
13	Percent of Cases Admitted to Hospital After a Visit to the Emergency Room by Select Causes, Westchester County Residents, 2009	12
14	Percentage Distribution of Emergency Room Visits by Hospital, Westchester County Residents, 2009	13
15	Percentage Distribution of Emergency Room Visits by Race and Hospital, Westchester County Residents, 2009	14
16	Percentage Distribution of Emergency Room Visits by Payer and Hospital, Westchester County Residents, 2009	17

## List of Tables in Text

A	Percent Distribution of Emergency Room Visits due to Select Causes and/or Syndromes by Hospital, Westchester County Residents, 2009	15
---	-------------------------------------------------------------------------------------------------------------------------------------	----

## Tables

1	Number of Emergency Room Visits by Hospital, Patient Disposition, and Residency, 2008-2009	19
2	Number of Emergency Room Visits by Sex and Hospital, Westchester County Residents, 2008-2009	20
3	Number of Emergency Room Visits by Age and Hospital, Westchester County Residents, 2008-2009	21
4	Number of Emergency Room Visits by Race/Ethnicity and Hospital, Westchester County Residents, 2008-2009	22
5	Number of Emergency Room Visits by Race/Ethnicity, Age and Payer, Westchester County Residents, 2008-2009	23
6	Number of Emergency Room Visits by Major Diagnosis Category and Hospital, Westchester County Residents, 2008-2009	24
7	Number of Emergency Room Visits by Payer and Hospital, Westchester County Residents, 2008-2009	25
8	Number of Emergency Room Visits by Major Diagnosis Category and Sex, Westchester County Residents, 2008-2009	26
9	Number of Emergency Room Visits by Major Diagnosis Category and Age, Westchester County Residents, 2008-2009	27
10	Number of Emergency Room Visits by Major Diagnosis Category and Sex, Westchester County Residents, 2008-2009	28
11	Number of Emergency Room Visits by Major Diagnosis Category and Race/Ethnicity, Westchester County Residents, 2008-2009	30
12	Number of Emergency Room Visits by Major Diagnosis Category, Race/Ethnicity and Age, Westchester County Residents, 2008-2009	31
13	Number of Emergency Room Visits by Major Diagnosis Category and Payer, Westchester County Residents, 2008-2009	35
14	Number of Emergency Room Visits by Major Diagnosis Category and Patient Disposition, Westchester County Residents, 2008-2009	36

## Appendices

A1	The Statewide Planning and Research Cooperative System (SPARCS)	37
A2	International Classification of Diseases, 9 <sup>th</sup> Revision, Clinical Modification (ICD-9)	39
A3	Westchester County Municipalities	42
A4	Health Planning Regions and Municipality Map	44



## HIGHLIGHTS

- During 2009, 319,617 Westchester County residents visited the emergency room (ER), resulting in an emergency room visit rate of 346 per 1,000 residents. Over 90% of such visits were made to the county's eleven acute care hospitals and two psychiatric hospitals.
- The ER visit rate was highest among those aged 75 and older and among those under the age of one year.
- In 2009, more women than men visited the emergency room, with women accounting for 53.3% of all ER cases.
- Blacks, Hispanics, and other minorities were overrepresented among those seeking treatment in emergency rooms in 2009, especially among children younger than 5 years of age. For example, the emergency room visit rate of whites was 256.3 per 1,000, among blacks the ER visit rate was 601.4 per 1,000, and among Hispanics the ER visit rate was 516.6 per 1,000.
- Of the Westchester County residents who visited emergency rooms in 2009, 49.7% had private health insurance, 17.7% were covered by Medicare, 17.3% were Medicaid recipients, 12.9% had no health insurance, and 2.4% were covered by other insurance programs.
- In 2009, nearly 75,000 Westchester County residents visited the emergency room because of an injury, making injuries the number one cause of emergency room visits and accounting for almost one-quarter (23.2%) of all cases treated in the emergency room. In addition, more males than females visited the ER as a result of an injury (53.2% vs. 46.8%).
- The five hospitals which received the greatest number of emergency room visits by Westchester County residents in 2009 were Saint Joseph's Hospital, Westchester Medical Center, Saint John's Riverside Hospital, White Plains Hospital Center, and Sound Shore Medical Center. Together they accounted for 51% of all emergency room visits. The remaining eight Westchester County hospitals received 39.7% of the emergency room visits made by Westchester County residents, and out-of-county hospitals saw the final 9.3% of the Westchester County cases seeking treatment in emergency rooms.

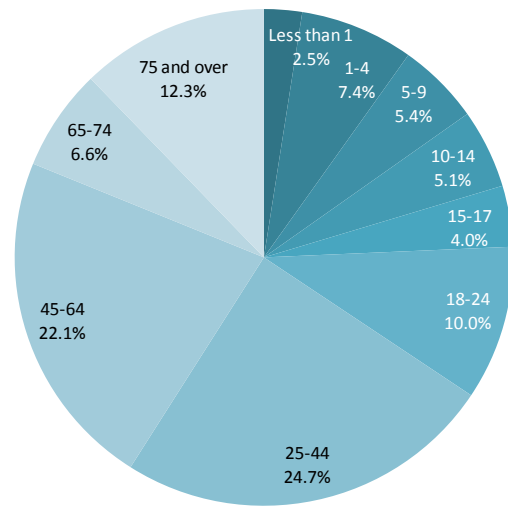
## Demographic Characteristics of Emergency Room Clients

### Age and Sex

During 2009, there were a total of 319,617 emergency room (ER) visits reported among Westchester County residents. The ER visit rate was 346 per 1,000, or almost 35%.

About 19% of the emergency room visits were among those aged 65 years and over. Twenty-two percent were among those aged 45 to 64. Almost one-quarter were among adults aged 25 to 44. Young adults aged 18 to 24 accounted for 10% of the ER visits, children from 5 to 17 years accounted for 14.5% of the ER visits, and children under the age of 5 accounted for 9.9% of all ER visits (Figure 1).

**Figure 1. Percentage Distribution of Emergency Room Visits by Age, Westchester County Residents, 2009**



Source: New York State Department of Health, Statewide Planning and Research Cooperative System (SPARCS). Data as of June 2010.

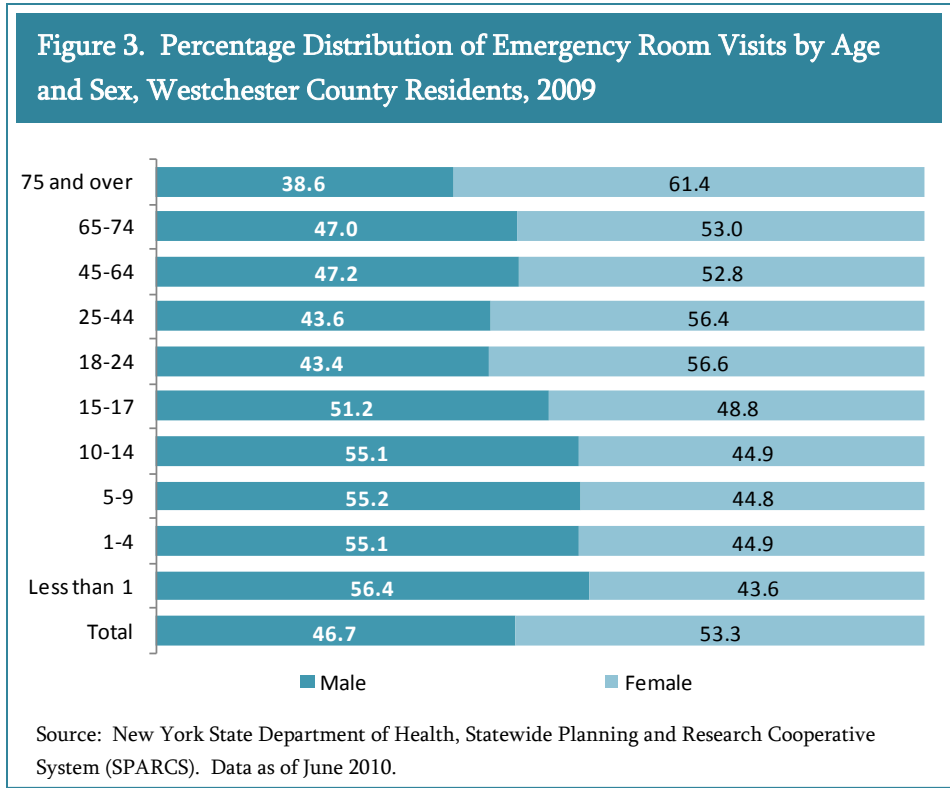
**Figure 2. Emergency Room Visit Rates by Age, Westchester County Residents, 2009**



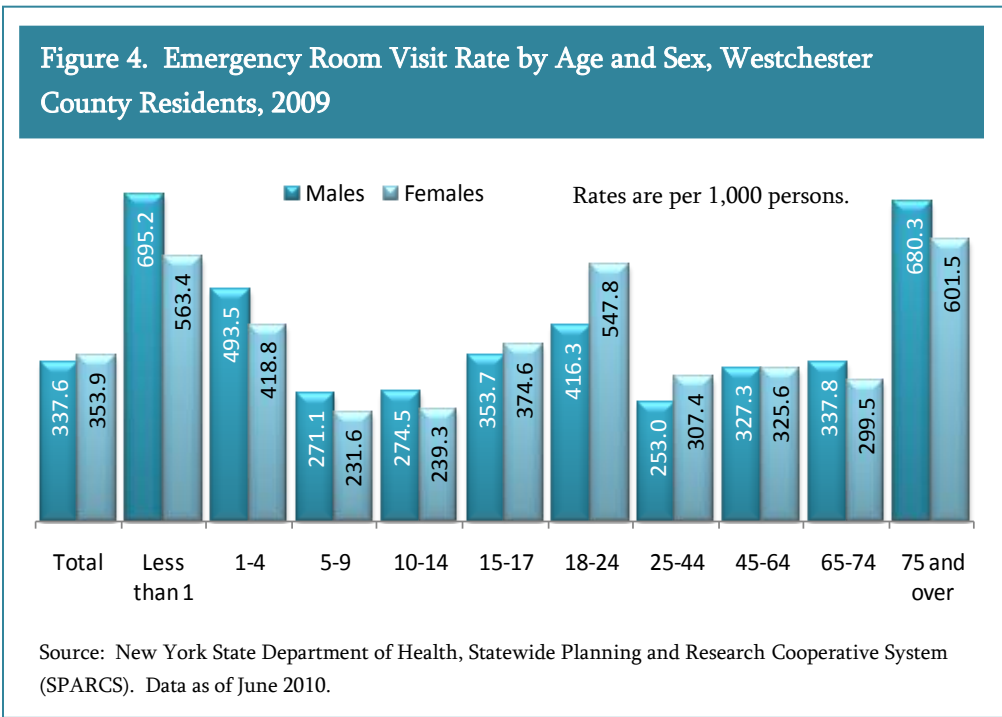
Source: New York State Department of Health, Statewide Planning and Research Cooperative System (SPARCS). Data as of June 2010.

The emergency room visit rate was the highest among those aged 75 and older (630 per 1,000) and those under the age of one (631 per 1,000). The emergency room visit rate was 482 per 1,000 for those aged 18-24 and 451 per 1,000 for those aged 1-4 (Figure 2).

In 2009, there were more emergency room visits among females than among males. The total number of female cases was 170,470, accounting for 53.3% of all the ER visits. The total number of male cases was 149,147, accounting for 46.7% of all ER visits. However, when examined by different age groups, it is found that there were more ER visits among males for children under age 18. Among those



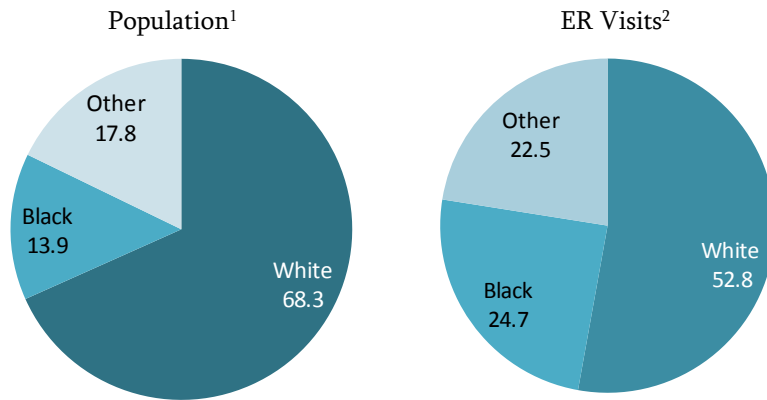
aged 18 years and over, females outnumbered males in each age group (Figure 3).



Overall, females had a higher ER visit rate than males (353.9 per 1,000 vs. 337.6 per 1,000). However, males had higher ER visit rates than females in all age groups but 15-17, 18-24, and 25-44 years (Figure 4).

## Race and Ethnicity

**Figure 5. Percentage Distribution of Population and Emergency Room Visits by Race, Westchester County**



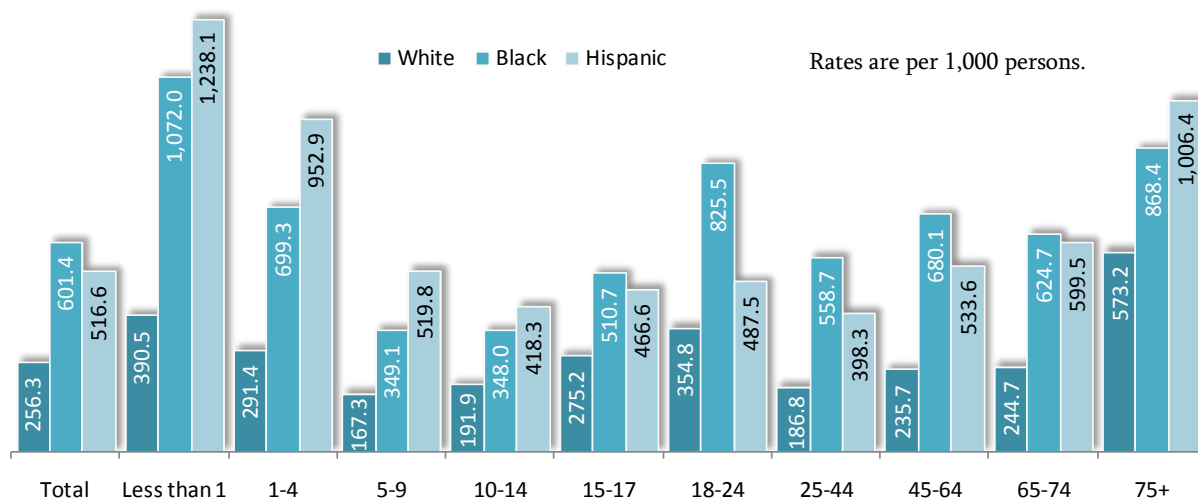
<sup>1</sup> Source: 2005-2007 American Community Survey

<sup>2</sup> Source: New York State Department of Health, Statewide Planning and Research Cooperative System (SPARCS). Data as of June 2010.

Of the 319,617 visits made to emergency rooms by Westchester County residents in 2009, 52.8% were by whites, 24.7% were by blacks, and 22.5% were by all other races. Hispanics accounted for 23.3% of all emergency room cases. According to the 2005-2007 American Community Survey, 13.9% of the county's population is black and 18.5% is Hispanic. Therefore, blacks and Hispanics were over-represented among emergency room patients in 2009 (Figure 5).

Blacks and Hispanics were more likely than whites to visit the emergency room. The ER visit rate was 256 per 1,000 among whites, 601 per 1,000 among blacks, and 517 per 1,000 among Hispanics (Figure 6). Blacks and Hispanics were also more likely to visit the emergency room in every age group. For example, the emergency room visit rate for those under one year of age was 390.5 per 1,000 among whites, 1,072.0 per 1,000 among blacks, and 1,238.1 per 1,000 among Hispanics.

**Figure 6. Emergency Room Visit Rate by Age and Race/Ethnicity, Westchester County Residents, 2009**

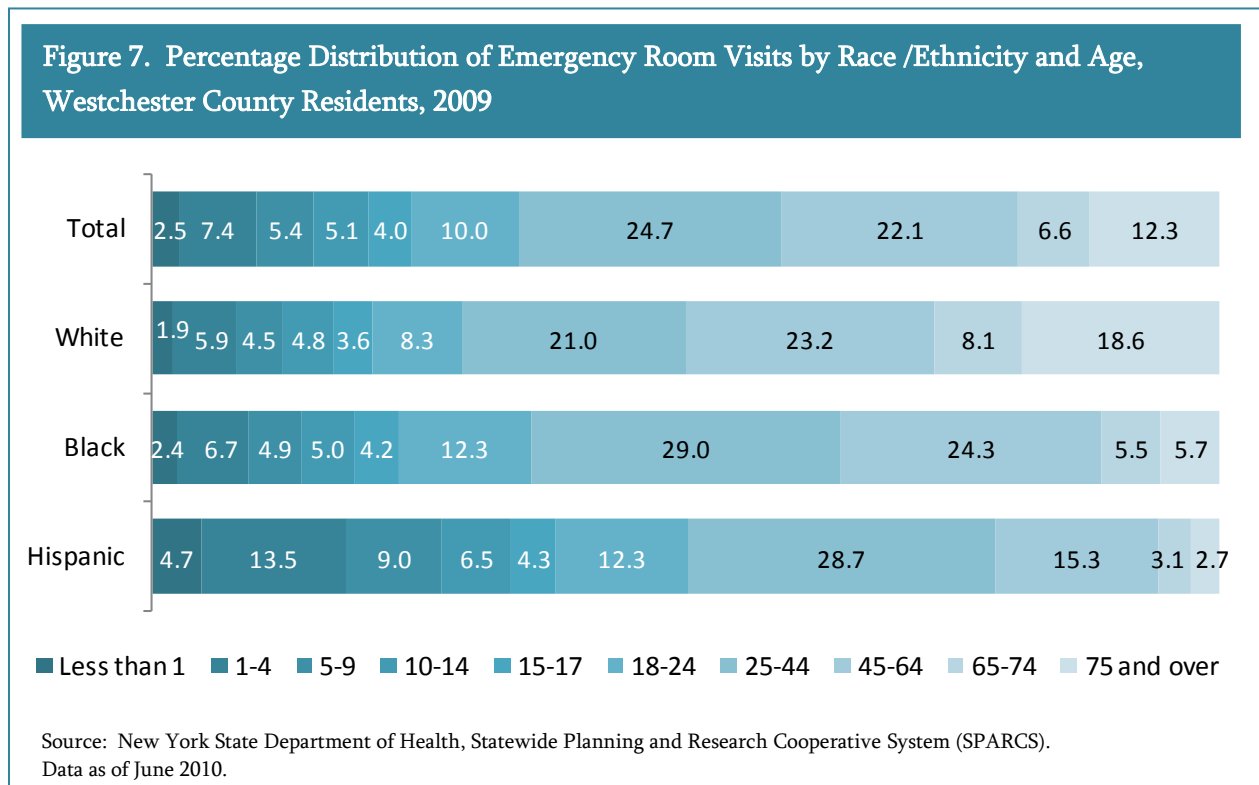


Source: New York State Department of Health, Statewide Planning and Research Cooperative System (SPARCS). Data as of June 2010.

Among those aged 18 to 24, the emergency room visit rate was 825.5 per 1,000 among blacks, 487.5 per 1,000 among Hispanics, and 354.8 per 1,000 among whites. Blacks accounted for more than 30% of all ER visits in this age group.

Among those aged 25 to 44, blacks accounted for 29.1% of all the emergency room visits, with an ER visit rate of 558.7 per 1,000. In contrast, the emergency room visit rate among whites for this age group was 186.8 per 1,000.

Among whites, 49.9% of emergency room cases were 45 or older. Those aged 65 years and older accounted for 26.7% of all emergency room cases (Figure 7).

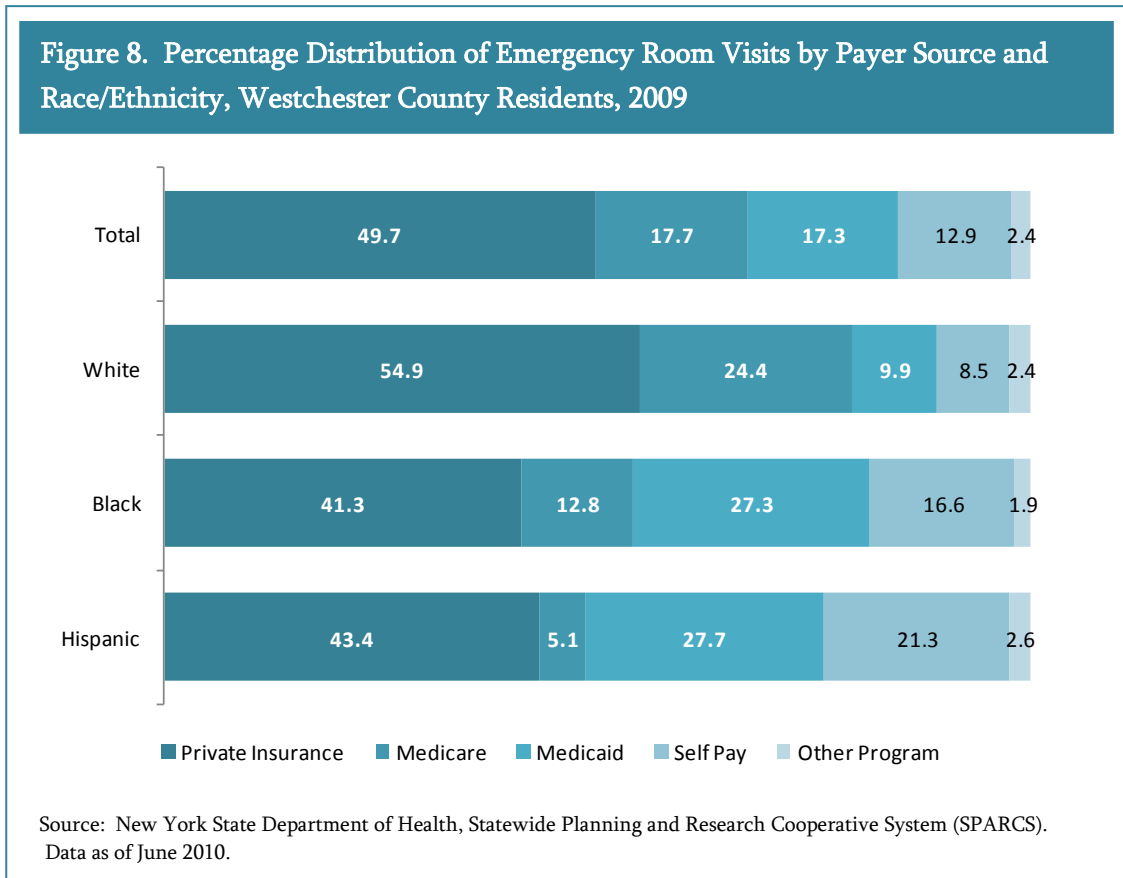


Among blacks, 64.5% of the emergency room patients were younger than 45, 35.5% was 45 years or older, and just 11.2% was 65 years or over. In addition, 35.5% of all emergency room cases among blacks were under 25.

Among Hispanics, 18.2% of the emergency room patients were under five, more than half (50.3%) were under 25, and only 21.1% were 45 or older.

## Payer Source

Most of the emergency room clients had health insurance coverage. Just about half (49.7) of those visiting emergency rooms in 2009 had private insurance, 17.7% had Medicare, 17.3% had Medicaid, and 2.4% had other insurance programs, such as worker’s compensation. Those with no insurance, who had to pay for their services out-of-pocket, accounted for 12.9% of the emergency room visits (Figure 8).

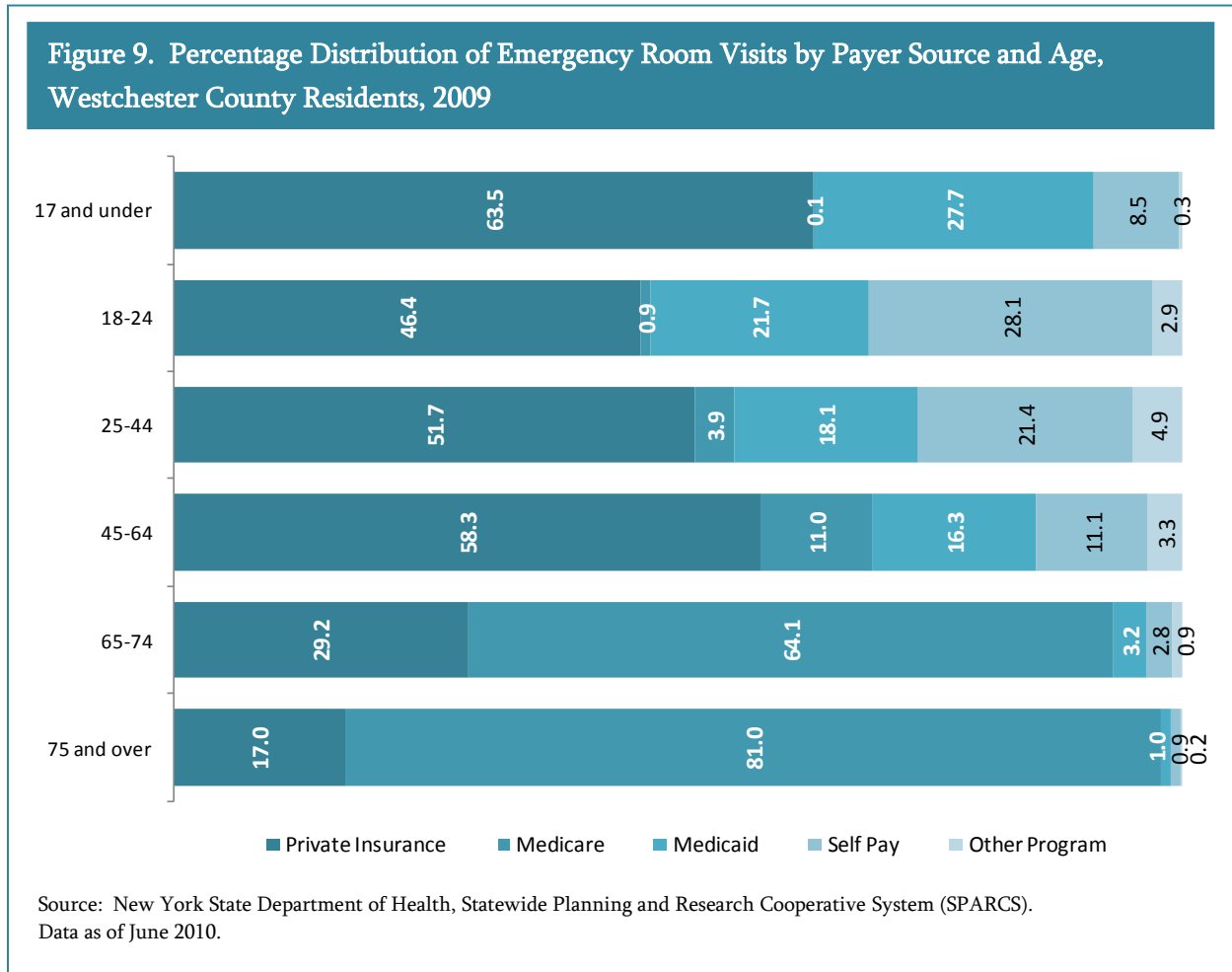


Health insurance coverage differed by race and ethnicity. Over half (54.9%) of the ER cases among whites had private health insurance, compared to 41.3% of blacks and 43.4% of Hispanics.

Less than ten percent (8.5%) of the ER cases among whites did not have health insurance coverage; 16.6% of blacks and 21.3% of Hispanics were classified as “self-pay” for their emergency room visits.

Black and Hispanic ER patients were also more likely to have Medicaid than white patients, while whites were more likely to have Medicare than their black or Hispanic counterparts. Of the ER cases among whites, 9.9% had Medicaid and 24.4% had Medicare. Among blacks, 27.3% had Medicaid and 12.8% had Medicare. And among Hispanics, 27.7% had Medicaid and 5.1% had Medicare.

Insurance coverage among emergency room patients also differed by age group. Among children under the age of 18, 63.5% of cases had private insurance. Almost one-third (27.7%) had Medicaid coverage and an additional 8.5% had no health insurance (Figure 9).



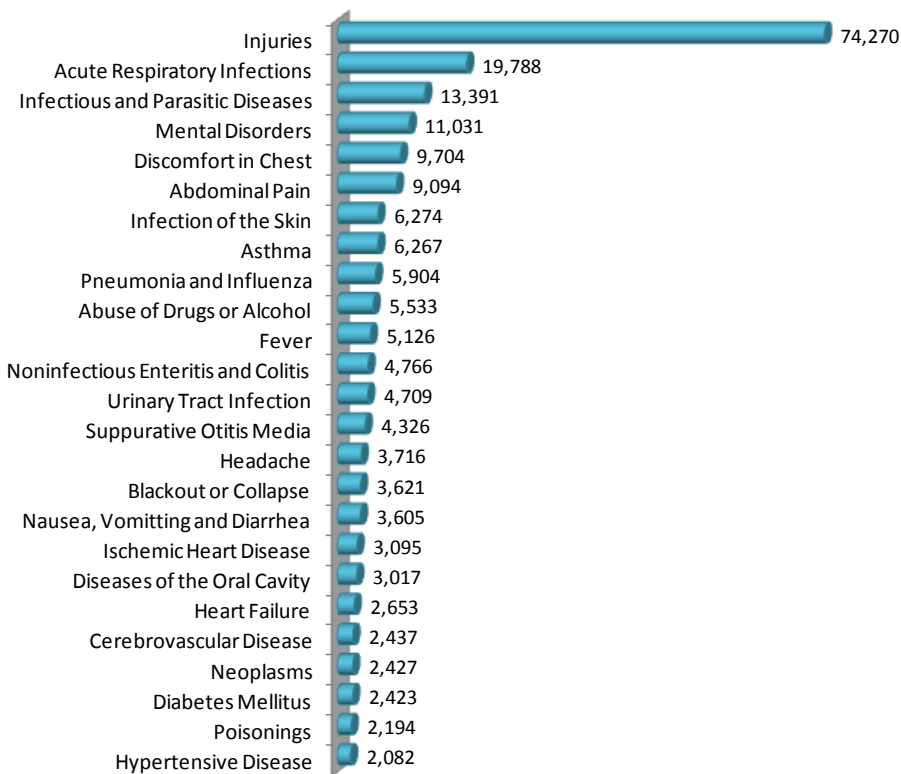
Young adults (18-24 years) and those aged 25-44 were the age groups with the largest proportion of uninsured: 28.1% of cases aged 18-24 and 21.4% of those between 25 and 44 years had no health insurance; and 21.7% and 18.1%, respectively, had Medicaid.

Those aged 65 years and over had the lowest rates of uninsured emergency room visitors. The majority of these cases had Medicare coverage: 64.1% among those aged 65 to 74 and 81.0% among those 75 years or older. Of those between 65 and 74 years of age, 29.2% had private insurance and only 2.8% were classified as self-pay. For those over the age of 75, 17.0% had private insurance and less than one percent (0.9%) paid for their emergency room visits out-of-pocket.

## Select Causes of Emergency Room Visits

The top cause of emergency room visits was injury. In 2009, close to 75,000 cases were treated in emergency rooms due to injuries, making up nearly one-quarter of all visits (23.2%) (Figure 10).

Figure 10. Number of Emergency Room Visits Due to Select Causes/Syndromes, Westchester County Residents, 2009



Source: New York State Department of Health, Statewide Planning and Research Cooperative System (SPARCS). Data as of June 2010.

Bacterial and viral infections were the cause of a large number of emergency room visits. For example, almost twenty thousand cases (19,788) visited emergency rooms due to an acute respiratory infection, accounting for over six percent (6.2%) of emergency room visits. Greater than four percent (4.2%) of all visits were due to infectious and parasitic diseases, which equaled nearly 13,400 cases. Another 5,900 cases were treated in emergency rooms because of pneumonia or influenza infections. Urinary tract infections caused 4,709 ER visits, suppurative otitis media (ear infection) was the

cause of 4,326 visits – mostly among children, and infections of the skin or subcutaneous tissues resulted in another 6,274 emergency room visits.

Chronic medical conditions were also a large contributor to the emergency room care sought by Westchester County residents. Asthma caused over 6,200 visits to the emergency room in 2009, accounting for 2.0% of the total emergency room visits. More than 2,400 cases received emergency room care for diabetes mellitus.



Over ten thousand emergency room cases were due to various cardiovascular diseases. For example, nearly 3,100 cases were due to ischemic heart disease, over 2,600 cases were a result of heart failure, 2,437 cases were caused by cerebrovascular disease, and 2,082 visits to the emergency room were due to hypertensive disease.

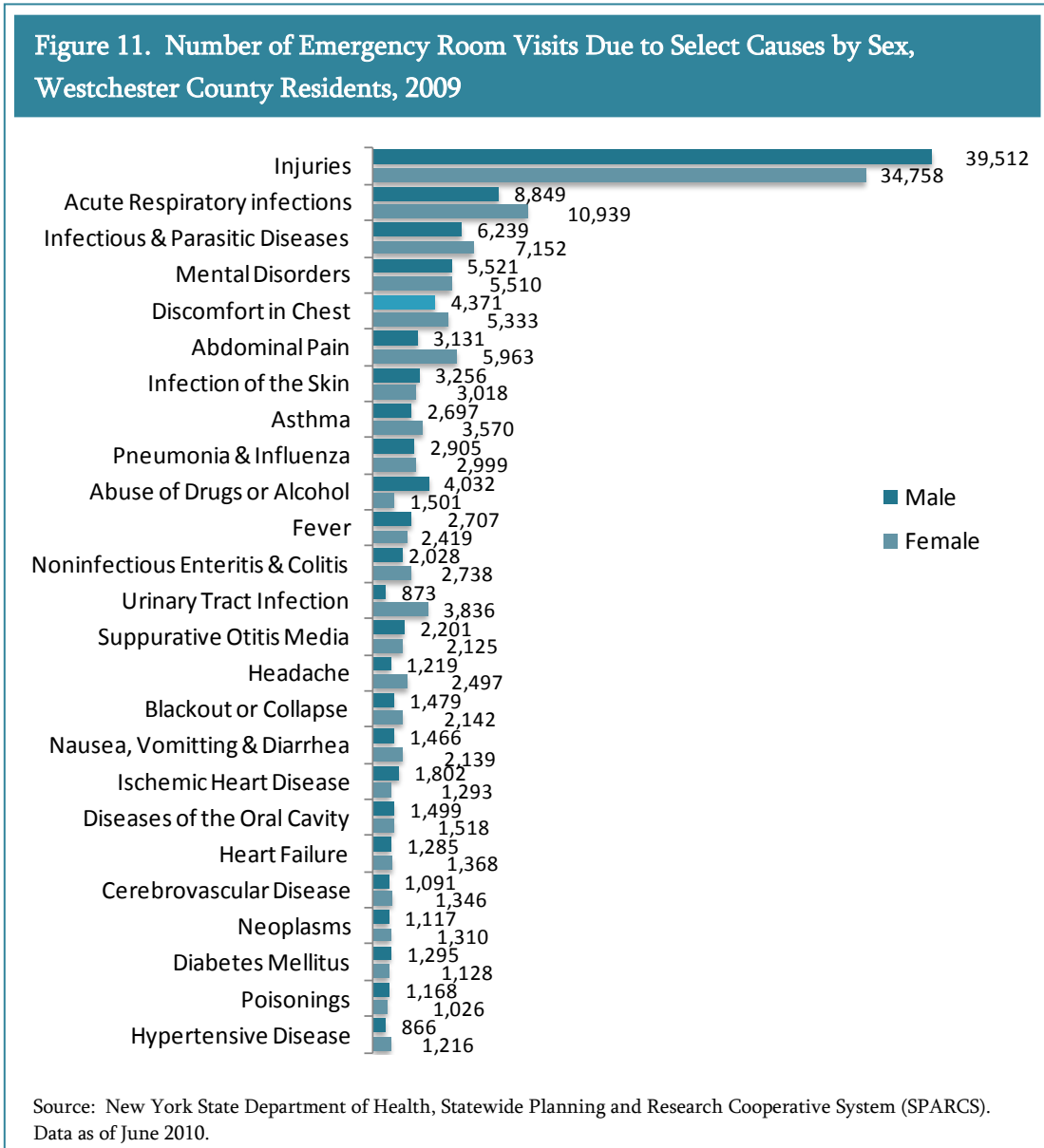
Over eleven thousand patients visited the ER because of mental disorders, accounting for 3.5% of all visits. More than 5,500 cases ended up in emergency rooms as a result of drug or alcohol abuse, and 2,194 emergency room cases were caused by poisonings.

Approximately 9,700 visitors to the emergency room in 2009 complained of discomfort in the chest, comprising 3.0% of total emergency room cases. Nearly 9,100 cases complained of abdominal pain, accounting for another 2.8% of emergency room visits. Fever resulted in 5,126 cases presenting to the emergency room, 3,700 emergency room cases complained of headache, slightly more than 3,600 cases were due to blackout or collapse, and nausea, vomiting and/or diarrhea caused 3,600 cases to visit emergency rooms.

Noninfectious enteritis and colitis was the cause of 4,766 emergency room visits. Over three thousand cases visited emergency rooms because of diseases of the oral cavity. And, more than 2,400 visits to emergency rooms were due to neoplasms.

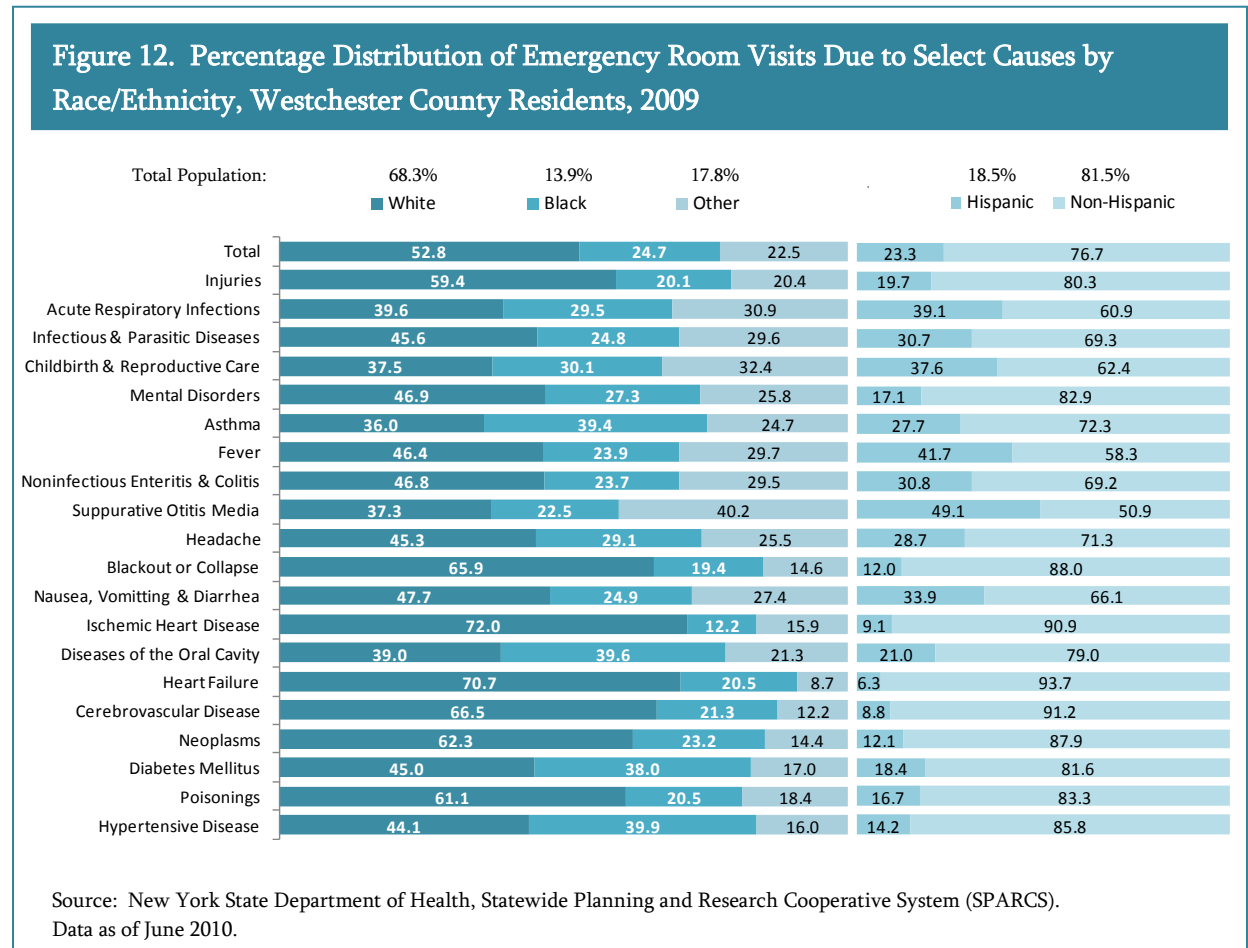
## Select Causes of Emergency Room Visits by Sex

In 2009, females outnumbered males for overall emergency room visits (53.3% vs. 46.7%), as well as for most diagnoses. However, there were fewer cases among females due to injury, mental disorders, abuse of drugs or alcohol, infection of the skin, fever, suppurative otitis media, ischemic heart disease, diabetes mellitus, and poisonings (Figure 11).



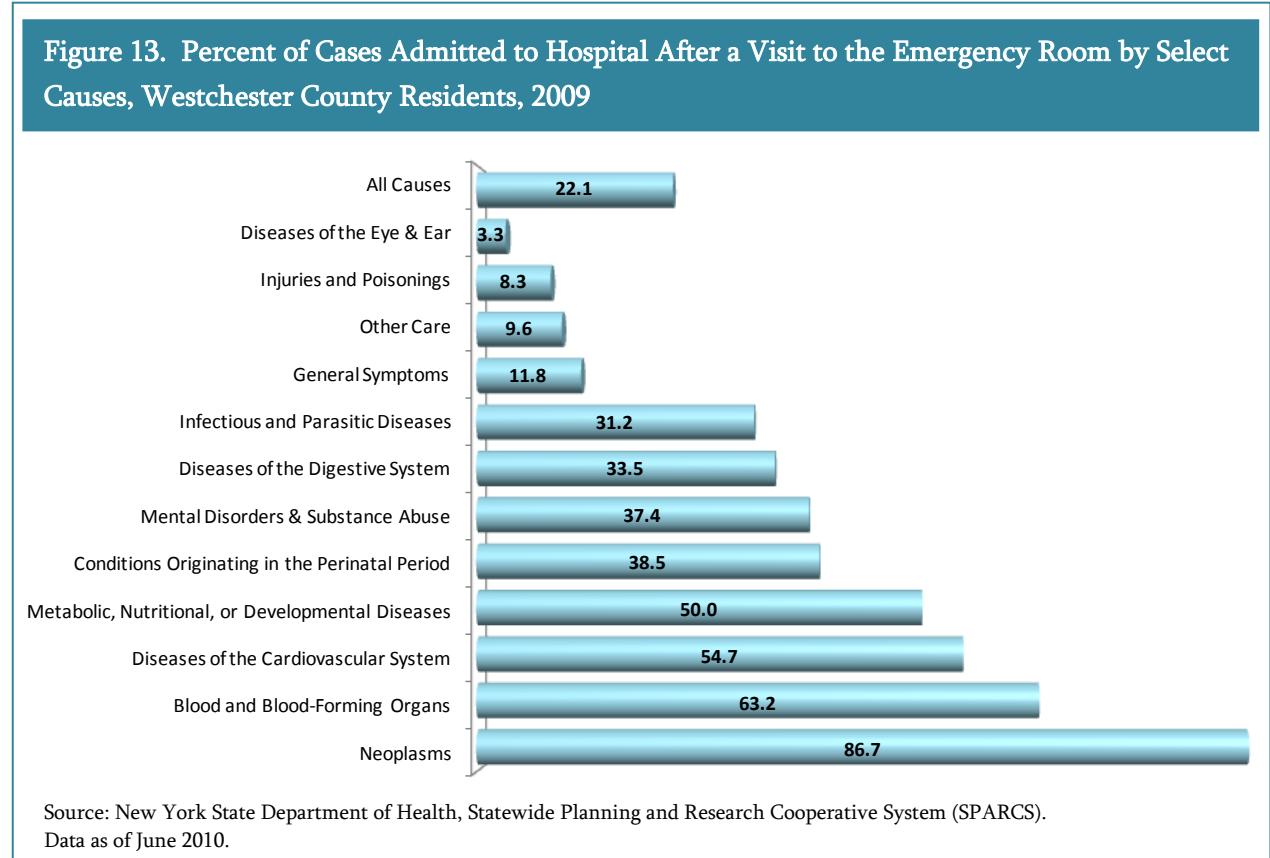
## Select Causes of Emergency Room Visits by Race and Ethnicity

Among emergency room patients, whites represented a large proportion of those seeking emergency care due to chronic diseases such as heart diseases and cancer. Blacks were overrepresented in all causes, especially asthma, diseases of the oral cavity, diabetes, and hypertensive diseases. Hispanics were overrepresented among the cases due to various infectious diseases and general symptoms such as fever and gastrointestinal symptoms (Figure 12).



### Select Causes of Emergency Room Visits by Patient Disposition

Most patients (77.9%) were discharged after receiving emergency care in the hospital. Only 22.1% of the patients visiting emergency rooms were admitted to the hospital (Figure 13).

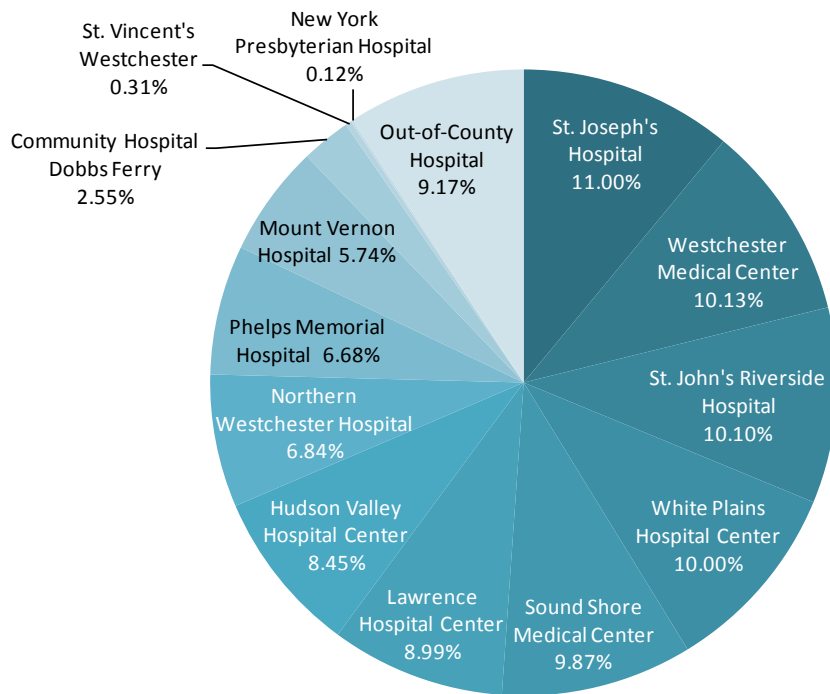


Certain causes had higher admission rates than others: metabolic, nutritional, and developmental diseases (50.0%), diseases of the cardiovascular system (54.7%), diseases of the blood and blood-forming organs (63.2%), and neoplasms (86.7%).

## Emergency Room Visits by Hospital

Among the 319,617 emergency room visits that occurred among Westchester County's residents during 2009, 90.8% were made to the county's eleven acute care hospitals and two psychiatric hospitals (Figure 14).

**Figure 14. Percentage Distribution of Emergency Room Visits by Hospital, Westchester County Residents, 2009**



Source: New York State Department of Health, Statewide Planning and Research Cooperative System (SPARCS). Data as of June 2010.

The five hospitals which received the greatest number of emergency room visits by Westchester County residents were: Saint Joseph's Hospital (11%), Westchester Medical Center (10.1%), Saint John's Riverside Hospital (10.1%), White Plains Hospital Center (10.0%), and Sound Shore Medical Center (9.9%).

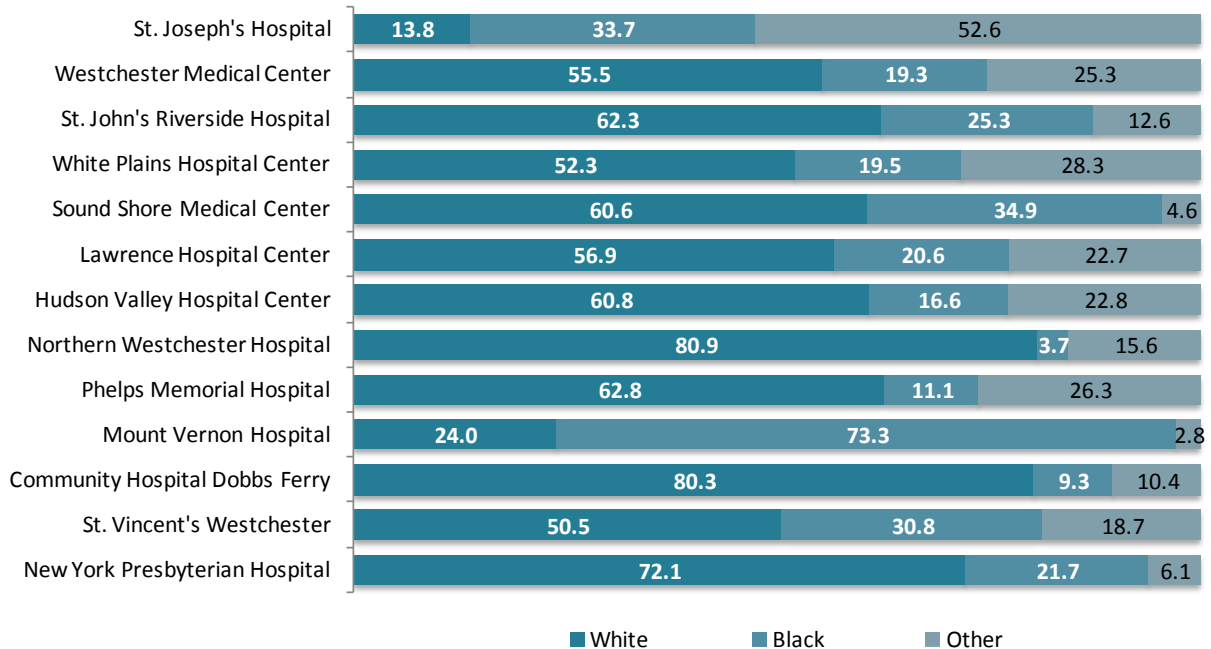
Together, these five hospitals accounted for 51.1% of all emergency room visits by Westchester County Residents.

## Emergency Room Visits by Hospital and Race and Ethnicity

The racial and ethnic composition of Westchester County’s emergency room patients differed depending on the hospital. For example, 33.7% of the cases visiting Saint Joseph’s Hospital, located in Yonkers, were black and 52.6% were of other minority races. At Mount Vernon Hospital, located in Mount Vernon, 73.3% of the cases were black and 2.8% belonged to other races (Figure 15).

The hospitals with the largest proportions of white patients were Northern Westchester Hospital, located in Mount Kisco (80.9% of cases were white) and the Community Hospital of Dobbs Ferry (80.3% white). The psychiatric hospital, New York Presbyterian (located in White Plains) also saw a larger than average proportion of white patients, with 72.1% of cases being white.

**Figure 15. Percentage Distribution of Emergency Room Visits by Race and Hospital, Westchester County Residents, 2009**



Source: New York State Department of Health, Statewide Planning and Research Cooperative System (SPARCS).  
Data as of June 2010.

The hospitals that treated the greatest proportions of Hispanics in their emergency rooms were Saint Joseph’s Hospital, with 44.4% of cases being Hispanic, and Saint John’s Riverside Hospital (35.6%), both located in Yonkers. The hospitals that served the smallest percentage of Hispanic patients in 2009 were the Community Hospital of Dobbs Ferry (7.8% of cases were Hispanic), Mount Vernon Hospital (11.5%), and Northern Westchester Hospital (11.7%).

## Emergency Room Visits by Hospital and Select Causes

Saint Joseph's Hospital, Westchester Medical Center, Saint John's Riverside Hospital, White Plains Hospital Center, and Sound Shore Medical Center were the five hospitals with the largest number of emergency room visits by Westchester County residents. These hospitals also treated 64.5% of the cases with acute respiratory infections.

Among the 19,788 patients seeking treatment for acute respiratory infections, Saint John's Riverside Hospital saw 17.9% of the patients visiting the emergency room with this diagnosis. Saint John's Hospital saw another 17.8%. Sound Shore Medical Center, Westchester Medical Center, and White Plains Hospital Center treated 11.8%, 9.4%, and 7.7%, respectively, of all cases visiting emergency rooms due to acute respiratory infections (Table A).

**Table A. Percent Distribution of Emergency Room Visits due to Select Causes and/or Syndromes by Hospital, Westchester County Residents, 2009**

	Total	Injuries	Acute Respiratory Infections	Infectious & Parasitic Diseases	Mental Disorders	Childbirth & Reproductive Care	Asthma	Pneumonia & Influenza	Abuse of Drugs or Alcohol	Fever
<b>Total Cases</b>	319,618	74,270	19,788	13,391	11,031	6,743	6,267	5,904	5,533	5,126
<b>Acute Care Hospitals</b>										
St. Joseph's Hospital	11.0	9.1	17.8	19.4	17.2	9.4	16.9	6.0	21.0	1.3
Westchester Medical Center	10.1	8.4	9.4	10.4	23.8	13.2	10.3	10.1	5.2	12.0
St. John's Riverside Hospital	10.1	8.6	17.9	9.2	2.0	11.6	9.1	13.8	3.9	15.8
White Plains Hospital Center	10.0	10.7	7.7	10.0	5.8	5.9	9.1	10.9	9.3	8.9
Sound Shore Medical Center	9.9	9.0	11.8	9.5	4.2	11.9	10.3	6.9	12.1	16.0
Lawrence Hospital Center	9.0	10.4	7.2	8.3	2.6	6.0	9.3	11.8	3.7	4.7
Hudson Valley Hospital Center	8.5	10.1	7.7	8.5	2.8	4.8	6.7	10.4	3.1	10.5
Northern Westchester Hospital	6.9	9.3	4.0	6.7	4.3	3.8	4.4	9.8	3.6	4.8
Phelps Memorial Hospital	6.7	7.4	4.7	5.1	5.7	3.8	4.5	7.4	8.4	7.2
Mount Vernon Hospital	5.7	4.9	5.8	4.4	12.5	4.7	11.4	4.0	9.3	5.5
Community Hospital Dobbs Ferry	2.5	4.4	2.2	2.5	0.6	0.4	1.4	2.4	1.1	0.7
<b>Specialty Hospitals</b>										
St. Vincent's Westchester	0.3	–	–	–	8.7	–	–	–	0.3	–
New York Presbyterian Hospital	0.1	–	–	–	3.4	–	–	–	0.1	–
SJRH Park Care Pavilion	0.0	–	–	–	–	–	–	–	0.2	–
<b>All Other Out-of-County Hospitals</b>	9.2	7.6	3.8	6.1	6.3	24.3	6.6	6.4	18.8	12.5
<b>Percent treated by top five hospitals</b>	51.0	45.9	64.5	58.4	53.0	48.8	55.7	47.8	51.4	54.1

Source: New York State Department of Health, Statewide Planning and Research Cooperative System (SPARCS). Data as of June 2010.

Some hospitals received disproportionately higher, or lower, numbers of cases due to certain diagnoses. For example, Saint Joseph's Hospital treated 11.0% of all emergency room cases in 2009, however, it provided medical care to 21.0% of emergency room cases due to drug or alcohol abuse, 19.4% of cases of infectious or parasitic diseases, 17.2% of cases with mental disorders, and 16.9% of cases due to asthma. Yet Saint Joseph's Hospital only treated 1.3% of the emergency room cases due to fever.

Westchester Medical Center received 10.1% of all emergency room visits made by county residents, yet it treated 23.8% of all the cases due to mental disorders, but only 5.2% of the drug or alcohol abuse cases.

Of the 5,126 emergency room visits caused by fever, Saint John's Riverside Hospital received 15.8% of all of these cases and Sound Shore Medical Center received 16.0%, although these hospitals only treated 10.1% and 9.9% of the total emergency room cases, respectively.

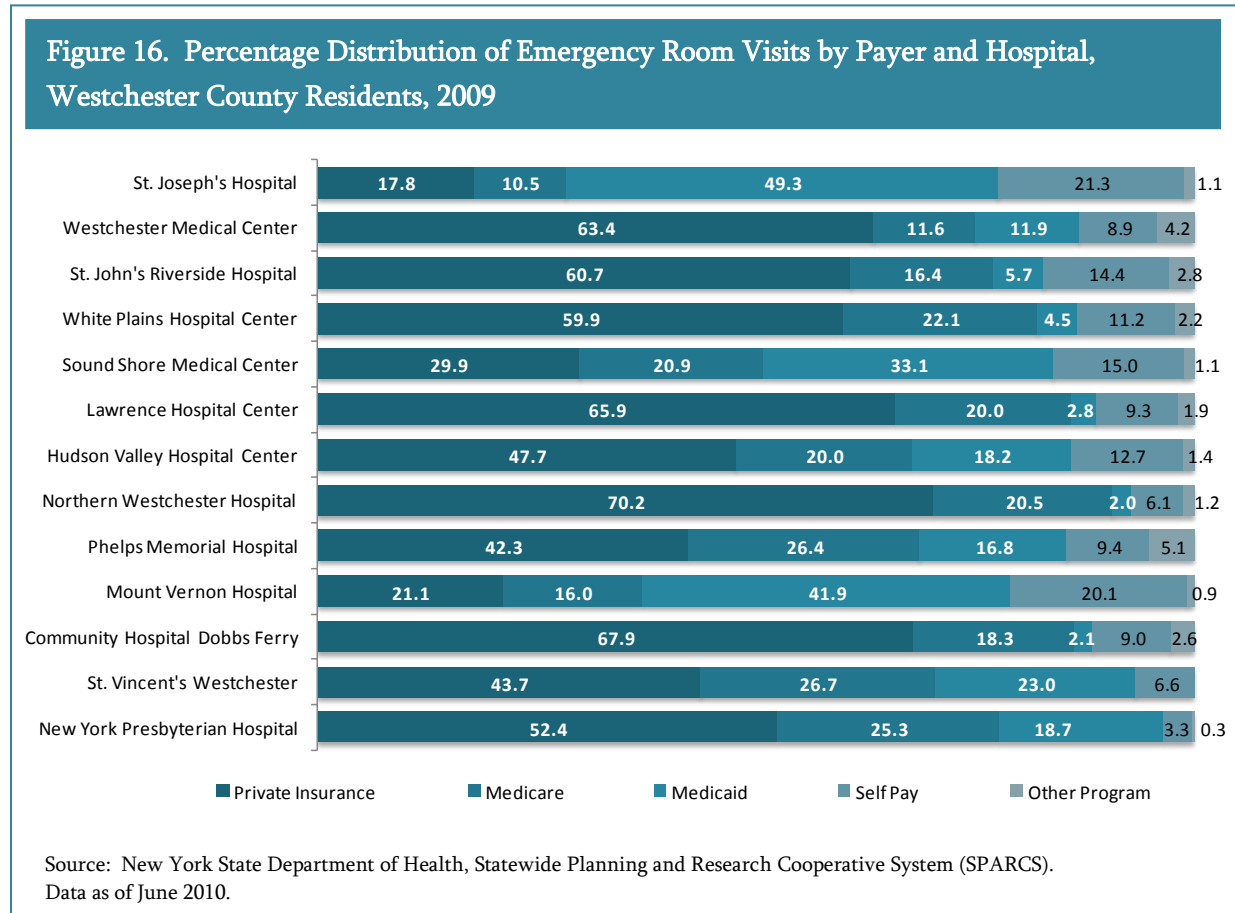
Similarly, Mount Vernon Hospital provided care to only 5.7% of all emergency room cases in 2009, yet it received 12.5% of all cases suffering from mental disorders, 11.4% of the cases seeking treatment for asthma, and 9.3% of the cases resulting from drug or alcohol abuse. Northern Westchester Hospital, while caring for only 6.9% of all visitors to the emergency room, received 9.3% of visits caused by injury and 9.8% of cases caused by pneumonia and influenza.

As presented in Table A, among the 319,618 emergency room visits made by Westchester County residents only 9.2% were made to out-of-county hospitals. However, nearly 25% of visits due to childbirth or reproductive care were paid to hospitals outside of Westchester County, and nearly 20% of visits due to drug or alcohol abuse were to out-of-county hospitals.



## Emergency Room Visits by Hospital and Payer

The distribution of payer source differed also by hospital. For example, the hospitals that treated the greatest proportion of uninsured patients (self-pay) were Saint Joseph’s Hospital, with 21.3% of its cases as self-pay, Mount Vernon Hospital (20.1%), and Sound Shore Medical Center (15.0%) (Figure 16).



In addition, the hospitals that treated the largest percentage of Medicaid patients in their emergency rooms were Saint Joseph’s Hospital, with 49.3% of its cases with Medicaid, Mount Vernon Hospital (41.9%), and Sound Shore Medical Center (33.1%). In fact, uninsured and Medicaid patients made up close to three-quarters (70.6%) of all cases visiting Saint Joseph’s emergency room, almost two-thirds (62.0%) of the cases visiting the emergency room at Mount Vernon Hospital, and almost half (48.1%) of the cases seeking treatment in the emergency room of Sound Shore Medical Center.

The hospitals that received the greatest proportion of patients covered by private insurance were Northern Westchester Hospital and the Community Hospital at Dobbs Ferry. Fewer than half (49.7%) of the cases seeking treatment in emergency rooms in 2009 had private insurance. However, 70% of the cases visiting the emergency room at Northern Westchester Hospital had private insurance and 67.9% of those visiting the emergency room at the Community Hospital of Dobbs Ferry were covered by private insurance.

Lawrence Hospital Center, Westchester Medical Center, and Saint John's Riverside Hospital also treated an above average number of cases with private insurance in their emergency rooms, 65.9%, 63.4%, and 60.7%, respectively.

In total, 17.7% of all emergency room cases in 2009 were Medicare recipients. Phelps Memorial Hospital and the two psychiatric hospitals, Saint Vincent's Westchester and New York Presbyterian, all treated an above average percentage of Medicare patients, 26.4%, 26.7%, and 25.3%, respectively.

# Tables



**Table 1. Number of Emergency Room Visits by Hospital, Patient Disposition, and Residency, 2008-2009**

	2008					2009				
	Total	Out Patient	In-patient	County Resident	Non-Resident	Total <sup>2</sup>	Out Patient	In-patient	County Resident	Non-Resident
<b>Total</b>	<b>370,621</b>	<b>281,318</b>	<b>89,303</b>	<b>310,713</b>	<b>59,908</b>	<b>382,254</b>	<b>293,274</b>	<b>88,980</b>	<b>319,618</b>	<b>62,636</b>
Westchester Medical Center	44,490	26,764	17,726	30,610	13,880	47,118	28,674	18,444	32,386	14,732
St. Joseph's Hospital	36,400	29,774	6,626	32,081	4,319	39,574	33,504	6,070	35,163	4,411
Lawrence Hospital Center	34,232	26,287	7,945	26,444	7,788	38,183	29,890	8,293	28,743	9,440
Sound Shore Medical Center	33,387	27,089	6,298	29,085	4,302	36,556	29,800	6,756	31,544	5,012
White Plains Hospital Center	43,128	34,052	9,076	38,480	4,648	35,662	27,776	7,886	31,972	3,690
Hudson Valley Hospital Center	33,899	28,898	5,001	25,474	8,425	35,604	30,399	5,205	27,008	8,596
St. John's Riverside Hospital	32,509	25,206	7,303	29,827	2,682	35,285	27,575	7,710	32,280	3,005
Northern Westchester Hospital	28,166	22,621	5,545	22,948	5,218	26,828	21,384	5,444	21,902	4,926
Phelps Memorial Hospital	21,631	16,456	5,175	18,727	2,904	24,696	19,003	5,693	21,389	3,307
Mount Vernon Hospital	20,538	16,514	4,024	18,176	2,362	20,753	16,636	4,117	18,369	2,384
Community Hospital Dobbs Ferry	9,385	8,144	1,241	8,296	1,089	9,287	8,401	886	8,140	1,147
SVCMC-St. Vincent's Westchester <sup>1</sup>	2,001	-	2,001	964	1,037	2,043	-	2,043	978	1,065
New York Presbyterian Hospital <sup>1</sup>	1,723	-	1,723	573	1,150	1,308	-	1,308	391	917
All Other Out-of-County Hospitals	29,132	19,513	9,619	29,028	104	29,314	20,209	9,105	29,314	-

<sup>1</sup> These hospitals do not have a physical emergency department but do have a 24 hour referral service.

<sup>2</sup> Total includes unidentified hospitals.

Source: New York State Department of Health, Statewide Planning and Research Cooperative System (SPARCS). Data as of June 2010.

**Table 2. Number of Emergency Room Visits by Sex and Hospital, Westchester County Residents, 2008-2009**

Hospital	2008			2009		
	Total <sup>1</sup>	Male	Female	Total <sup>1</sup>	Male	Female
<b>Total</b>	<b>310,713</b>	<b>146,862</b>	<b>163,844</b>	<b>319,618</b>	<b>149,147</b>	<b>170,471</b>
St. Joseph's Hospital	32,081	15,423	16,658	35,163	16,545	18,618
Westchester Medical Center	30,610	16,329	14,281	32,386	17,131	15,255
St. John's Riverside Hospital	29,827	12,747	17,080	32,280	13,794	18,486
White Plains Hospital Center	38,480	17,946	20,533	31,972	14,696	17,276
Sound Shore Medical Center	29,085	13,402	15,683	31,544	14,451	17,093
Lawrence Hospital Center	26,444	11,933	14,510	28,743	12,618	16,125
Hudson Valley Hospital Center	25,474	12,104	13,366	27,008	12,462	14,546
Northern Westchester Hospital	22,948	11,258	11,690	21,902	10,582	11,320
Phelps Memorial Hospital	18,727	8,745	9,982	21,389	9,720	11,669
Mount Vernon Hospital	18,176	8,280	9,896	18,369	8,200	10,169
Community Hospital Dobbs Ferry	8,296	3,941	4,355	8,140	3,805	4,335
SVCMC-St. Vincent's Westchester <sup>2</sup>	964	477	487	978	504	474
New York Presbyterian Hospital <sup>2</sup>	573	269	304	391	194	197
All Other Out-of-County Hospitals	29,028	14,008	15,019	29,314	14,445	14,869

<sup>1</sup> Totals may include unknown sex and unidentified hospitals.

<sup>2</sup> These hospitals do not have a physical emergency department but do have a 24 hour referral service.

Source: New York State Department of Health, Statewide Planning and Research Cooperative System (SPARCS). Data as of June 2010.

**Table 3. Number of Emergency Room Visits by Age and Hospital, Westchester County Residents, 2008-2009**

2008											
	Total	<1	1-4	5-9	10-14	15-17	18-24	25-44	45-64	65-74	75+
<b>Total</b>	<b>310,713</b>	<b>7,819</b>	<b>21,083</b>	<b>14,866</b>	<b>14,613</b>	<b>11,752</b>	<b>29,834</b>	<b>79,628</b>	<b>69,832</b>	<b>20,986</b>	<b>40,300</b>
White Plains Hospital Center	38,480	878	2,437	1,682	1,520	1,298	3,233	9,226	9,029	3,007	6,170
St. Joseph's Hospital	32,081	701	2,371	1,689	1,490	1,365	4,341	9,755	6,898	1,550	1,921
Westchester Medical Center	30,610	1,862	3,616	2,141	2,044	1,593	2,544	6,792	6,019	1,593	2,406
St. John's Riverside Hospital	29,827	1,057	2,625	1,495	1,213	957	2,898	7,630	5,879	1,845	4,228
Sound Shore Medical Center	29,085	921	2,305	1,487	1,216	870	2,863	7,096	5,967	2,053	4,307
Lawrence Hospital Center	26,444	458	1,466	1,133	1,103	753	1,954	6,590	5,778	2,039	5,170
Hudson Valley Hospital Center	25,474	391	1,435	1,225	1,365	1,079	2,324	6,200	6,061	1,682	3,712
Northern Westchester Hospital	22,948	482	1,590	1,347	1,496	1,171	1,545	4,592	5,359	1,727	3,639
Phelps Memorial Hospital	18,727	248	856	699	836	631	1,574	4,564	4,481	1,456	3,382
Mount Vernon Hospital	18,176	181	659	624	629	539	2,089	5,822	4,788	1,296	1,549
Community Hospital Dobbs Ferry	8,296	31	284	387	598	452	692	2,018	2,008	580	1,246
SVCMC-St. Vincent's Westchester <sup>1</sup>	964	-	-	-	39	88	132	309	333	42	21
New York Presbyterian Hospital <sup>1</sup>	573	-	-	7	46	40	82	177	146	28	47
All Other Out-of-County Hospitals	29,028	609	1,439	950	1,018	916	3,563	8,857	7,086	2,088	2,502
2009											
	Total <sup>2</sup>	<1	1-4	5-9	10-14	15-17	18-24	25-44	45-64	65-74	75+
<b>Total</b>	<b>319,617</b>	<b>7,904</b>	<b>23,629</b>	<b>17,122</b>	<b>16,416</b>	<b>12,654</b>	<b>32,049</b>	<b>78,832</b>	<b>70,726</b>	<b>21,131</b>	<b>39,154</b>
St. Joseph's Hospital	35,163	796	3,113	2,271	1,853	1,546	4,759	9,949	7,342	1,633	1,901
Westchester Medical Center	32,386	1,988	4,291	2,588	2,390	1,774	2,832	6,685	6,030	1,567	2,241
St. John's Riverside Hospital	32,280	1,072	2,902	1,858	1,446	1,115	3,300	8,104	6,380	1,956	4,134
White Plains Hospital Center	31,972	628	2,104	1,464	1,438	1,114	2,807	7,192	7,387	2,572	5,279
Sound Shore Medical Center	31,544	905	2,537	1,780	1,473	1,023	3,241	7,624	6,520	2,115	4,326
Lawrence Hospital Center	28,742	499	1,827	1,392	1,279	868	2,217	7,423	6,077	2,111	5,049
Hudson Valley Hospital Center	27,008	383	1,708	1,505	1,454	1,156	2,539	6,269	6,422	1,774	3,798
Northern Westchester Hospital	21,902	403	1,456	1,333	1,587	1,093	1,603	4,131	4,987	1,756	3,553
Phelps Memorial Hospital	21,389	420	1,087	957	1,046	805	1,893	4,845	5,004	1,653	3,679
Mount Vernon Hospital	18,369	198	737	624	708	611	2,232	5,510	5,080	1,180	1,489
Community Hospital Dobbs Ferry	8,140	33	324	397	616	469	763	1,860	1,974	546	1,158
SVCMC-St. Vincent's Westchester <sup>1</sup>	978	-	-	-	45	100	134	325	292	53	29
New York Presbyterian Hospital <sup>1</sup>	391	-	-	8	36	24	50	128	100	15	30
All Other Out-of-County Hospitals	29,314	579	1,543	945	1,045	955	3,670	8,767	7,123	2,200	2,487

<sup>1</sup> These hospitals do not have a physical emergency department but do have a 24 hour referral service.

<sup>2</sup> Totals may include unknown age and unidentified hospitals.

Source: New York State Department of Health, Statewide Planning and Research Cooperative System (SPARCS). Data as of June 2010.

**Table 4. Number of Emergency Room Visits by Race/Ethnicity and Hospital, Westchester County Residents, 2008-2009**

	2008					2009				
	Total	White	Black	Other <sup>1</sup>	Hispanic <sup>2</sup>	Total <sup>3</sup>	White	Black	Other <sup>1</sup>	Hispanic <sup>2</sup>
<b>Total</b>	<b>310,713</b>	<b>167,241</b>	<b>74,659</b>	<b>68,813</b>	<b>65,839</b>	<b>319,618</b>	<b>168,857</b>	<b>78,869</b>	<b>71,892</b>	<b>74,448</b>
St. Joseph's Hospital	32,081	4,842	11,006	16,233	13,495	35,163	4,849	11,822	18,492	15,598
Westchester Medical Center	30,610	16,800	5,795	8,015	6,895	32,386	17,954	6,250	8,182	8,406
St. John's Riverside Hospital	29,827	18,258	7,598	3,971	9,830	32,280	20,080	8,155	4,045	11,474
White Plains Hospital Center	38,480	20,472	7,741	10,267	7,820	31,972	16,696	6,240	9,036	6,729
Sound Shore Medical Center	29,085	17,377	9,892	1,816	6,334	31,544	19,098	10,987	1,459	8,350
Lawrence Hospital Center	26,444	15,792	4,766	5,886	3,326	28,743	16,321	5,914	6,508	4,055
Hudson Valley Hospital Center	25,474	16,009	4,234	5,231	3,842	27,008	16,402	4,472	6,134	4,330
Northern Westchester Hospital	22,948	18,756	781	3,411	2,502	21,902	17,688	800	3,414	2,555
Phelps Memorial Hospital	18,727	11,898	1,999	4,830	3,896	21,389	13,413	2,361	5,615	4,661
Mount Vernon Hospital	18,176	4,619	12,989	568	1,947	18,369	4,405	13,444	520	2,101
Community Hospital Dobbs Ferry	8,296	6,788	633	875	630	8,140	6,540	754	846	633
SVCMC-St. Vincent's Westchester <sup>4</sup>	964	494	303	167	135	978	494	301	183	145
New York Presbyterian Hospital <sup>4</sup>	573	451	98	24	43	391	282	85	24	58
All Other Out-of-County Hospitals	29,028	14,685	6,824	7,519	5,144	29,314	14,617	7,272	7,425	5,342

<sup>1</sup> Includes Native Americans, Asian, Pacific Islanders, Other and unknown race.

<sup>2</sup> Hispanic is an ethnic group and may be of any race. Therefore, Hispanics are also reported in the race categories.

<sup>3</sup> Totals include unidentified hospitals.

<sup>4</sup> These hospitals do not have a physical emergency department but do have a 24 hour referral service.

Source: New York State Department of Health, Statewide Planning and Research Cooperative System (SPARCS). Data as of June 2010.



**Table 5. Number of Emergency Room Visits by Race/Ethnicity, Age, and Payer, Westchester County Residents, 2008-2009**

2008								
	Total <sup>1</sup>	Private Insurance	Medicare	Medicaid	Self Pay	Workers Compensation	Federal Programs	Other Programs
<b>Total</b>	<b>310,713</b>	<b>156,552</b>	<b>58,713</b>	<b>46,092</b>	<b>42,506</b>	<b>5,959</b>	<b>141</b>	<b>750</b>
White	167,241	92,569	43,159	13,437	14,488	3,245	76	267
Black	74,659	30,738	10,281	18,913	13,497	969	35	226
Other	68,813	33,245	5,273	13,742	14,521	1,745	30	257
Hispanic	65,839	29,340	3,591	15,737	15,524	1,482	26	139
Less than 1	7,819	4,873	2	2,381	547	-	-	16
1-4	21,083	13,681	28	5,139	2,191	7	17	20
5-9	14,866	9,951	24	3,422	1,442	2	8	17
10-14	14,613	10,346	11	2,922	1,302	10	1	21
15-17	11,752	7,765	27	2,547	1,351	28	4	30
18-24	29,834	14,157	244	5,658	8,975	676	24	100
25-44	79,628	42,167	3,382	12,785	17,782	3,152	39	321
45-64	69,832	41,506	8,050	10,141	7,943	1,961	33	198
65-74	20,986	5,721	13,857	692	591	98	7	20
75 and over	40,300	6,385	33,088	405	382	25	8	7
2009								
<b>Total</b>	<b>319,618</b>	<b>158,990</b>	<b>56,431</b>	<b>55,361</b>	<b>41,274</b>	<b>5,752</b>	<b>250</b>	<b>1,560</b>
White	168,857	92,706	41,123	16,636	14,315	3,282	108	687
Black	78,869	32,597	10,116	21,529	13,122	1,052	84	369
Other	71,892	33,687	5,192	17,196	13,837	1,418	58	504
Hispanic	74,448	32,279	3,810	20,593	15,829	1,369	67	501
Less than 1	7,904	4,699	1	2,691	488	1	5	19
1-4	23,629	14,646	17	6,877	2,046	2	26	15
5-9	17,122	10,792	8	4,849	1,428	1	21	23
10-14	16,416	11,076	8	3,971	1,313	7	10	31
15-17	12,654	8,114	7	3,155	1,293	25	4	56
18-24	32,049	14,857	294	6,964	9,017	613	49	255
25-44	78,832	40,790	3,049	14,293	16,875	3,026	69	730
45-64	70,726	41,208	7,780	11,521	7,882	1,917	55	363
65-74	21,131	6,160	13,542	666	583	130	6	44
75 and over	39,154	6,648	31,724	374	349	30	5	24

<sup>1</sup> Total includes unknown age.

Source: New York State Department of Health, Statewide Planning and Research Cooperative System (SPARCS). Data as of June 2010.

**Table 6. Number of Emergency Room Visits by Major Diagnosis Category and Hospital, Westchester County Residents, 2008-2009**

2008													
	Total <sup>1</sup>	St. Joseph's Hospital	Westchester Medical Center	St. John's Riverside Hospital	White Plains Hospital Center	Sound Shore Medical Center	Lawrence Hospital Center	Hudson Valley Hospital Center	Northern Westchester Hospital	Phelps Memorial Hospital	Mount Vernon Hospital	Community Hospital Dobbs Ferry	All Other Out-of-County Hospitals
<b>Total</b>	<b>310,713</b>	<b>32,081</b>	<b>30,610</b>	<b>29,827</b>	<b>38,480</b>	<b>29,085</b>	<b>26,444</b>	<b>25,474</b>	<b>22,948</b>	<b>18,727</b>	<b>18,176</b>	<b>8,296</b>	<b>29,028</b>
Injuries and Poisonings	80,545	6,772	6,691	6,747	10,393	7,061	7,860	8,030	7,926	5,325	4,001	3,450	6,289
Diseases of the Respiratory System	35,236	4,621	3,041	4,634	4,091	3,369	3,173	2,894	1,978	1,924	2,362	829	2,320
General Symptoms	28,595	1,968	2,969	3,351	3,864	2,954	2,201	2,562	2,344	1,595	1,464	453	2,870
Diseases of the Cardiovascular System	28,180	1,870	2,957	3,131	3,554	2,723	2,633	2,239	2,211	1,551	1,690	499	3,122
Diseases of the Digestive System	24,996	2,534	2,808	2,371	3,379	2,421	2,146	1,779	1,861	1,593	1,268	657	2,179
Diseases of the Musculoskeletal & Nervous Systems	20,624	2,156	1,819	1,654	2,703	1,959	1,736	1,893	1,218	1,396	1,238	492	2,346
Mental Disorders & Substance Abuse	16,372	3,067	2,850	365	1,477	949	445	437	752	937	1,783	134	1,663
Diseases of the Urogenital System	15,593	1,779	1,117	1,856	2,160	1,518	1,396	1,189	1,131	1,003	803	351	1,290
Diseases of the Skin	13,339	1,435	1,054	1,604	1,573	1,270	1,210	1,202	863	859	830	400	1,039
Infectious and Parasitic Diseases	10,840	1,617	760	1,135	1,446	1,117	869	944	739	521	634	306	752
Diseases of the Eye & Ear	9,799	1,342	950	1,039	1,183	974	801	872	632	527	510	267	702
Other Care	8,780	1,524	1,335	258	805	949	650	520	395	622	496	226	991
Childbirth and Reproductive Care	6,788	621	810	688	498	741	304	272	222	245	358	41	1,988
Metabolic, Nutritional, or Developmental Diseases	6,267	576	667	630	868	586	620	428	409	385	479	129	489
Neoplasms	2,336	97	343	188	228	187	205	104	147	123	91	37	586
Blood and Blood-Forming Organs	2,107	97	307	166	232	251	189	105	112	95	167	24	362
Conditions Originating in the Perinatal Period	316	5	132	10	26	56	6	4	8	26	2	1	40
2009													
<b>Total</b>	<b>319,618</b>	<b>35,163</b>	<b>32,386</b>	<b>32,280</b>	<b>31,972</b>	<b>31,544</b>	<b>28,743</b>	<b>27,008</b>	<b>21,902</b>	<b>21,389</b>	<b>18,369</b>	<b>8,140</b>	<b>29,314</b>
Injuries and Poisonings	79,171	7,078	6,899	6,708	8,501	7,181	8,160	7,931	7,371	5,745	3,866	3,379	6,352
Diseases of the Respiratory System	41,505	5,720	3,860	5,836	3,747	4,301	3,892	3,419	2,222	2,518	2,520	939	2,531
General Symptoms	29,703	1,934	2,766	3,633	3,285	3,270	2,428	3,004	2,132	2,082	1,559	457	3,153
Diseases of the Cardiovascular System	27,509	1,937	2,846	3,019	2,985	2,815	2,771	2,328	2,094	1,653	1,572	468	3,019
Diseases of the Digestive System	24,642	2,735	2,803	2,379	2,631	2,640	2,222	1,866	1,670	1,773	1,357	528	2,036
Diseases of the Musculoskeletal & Nervous Systems	20,445	2,102	1,935	1,701	2,041	2,130	1,740	1,972	1,125	1,583	1,113	496	2,502
Mental Disorders & Substance Abuse	16,564	3,062	2,915	444	1,155	1,132	495	483	669	1,093	1,897	125	1,732
Diseases of the Urogenital System	15,945	1,981	1,177	2,022	1,711	1,565	1,601	1,222	1,043	1,094	891	373	1,258
Infectious and Parasitic Diseases	13,391	2,604	1,386	1,228	1,333	1,268	1,114	1,136	895	685	591	332	819
Diseases of the Skin	13,169	1,574	1,102	1,542	1,324	1,241	1,348	1,162	768	944	785	361	1,018
Diseases of the Eye & Ear	9,997	1,587	973	1,096	911	1,103	788	851	577	629	551	265	666
Other Care	9,302	1,474	1,283	722	732	958	716	645	322	679	451	209	1,109
Childbirth and Reproductive Care	6,743	634	887	785	396	800	407	321	253	254	315	26	1,639
Metabolic, Nutritional, or Developmental Diseases	6,436	529	749	699	808	602	630	385	474	391	560	131	478
Neoplasms	2,427	106	376	211	200	225	208	132	156	132	122	25	532
Blood and Blood-Forming Organs	2,303	103	303	188	196	247	217	145	113	119	213	24	435
Conditions Originating in the Perinatal Period	366	3	126	67	16	66	6	6	18	15	6	2	35

<sup>1</sup> Totals include cases from St. Vincent's Hospital Westchester and New York Presbyterian Hospital: these hospitals do not have a physical emergency department but do have a 24 hour referral service; as well as unidentified hospitals.

Source: New York State Department of Health, Statewide Planning and Research Cooperative System (SPARCS). Data as of June 2010.

**Table 7. Number of Emergency Room Visits by Payer and Hospital, Westchester County Residents, 2008-2009**

2008								
	Total <sup>1</sup>	Private Insurance	Medicare	Medicaid	Self Pay	Worker's Compensation	Other Programs	Federal Programs
<b>Total</b>	<b>310,713</b>	<b>156,552</b>	<b>58,713</b>	<b>46,092</b>	<b>42,506</b>	<b>5,959</b>	<b>750</b>	<b>141</b>
White Plains Hospital Center	38,480	22,522	8,511	1,825	4,645	977	-	-
St. Joseph's Hospital	32,081	5,779	3,817	14,380	7,643	458	-	4
Westchester Medical Center	30,610	18,618	4,060	3,563	3,384	662	323	-
St. John's Riverside Hospital	29,827	17,473	5,306	1,659	4,579	695	85	30
Sound Shore Medical Center	29,085	8,937	7,043	8,558	4,547	-	-	-
Lawrence Hospital Center	26,444	16,763	5,864	780	2,372	665	-	-
Hudson Valley Hospital Center	25,474	14,081	5,249	2,692	2,943	465	-	44
Northern Westchester Hospital	22,948	15,839	4,554	440	1,794	321	-	-
Phelps Memorial Hospital	18,727	8,934	4,735	2,315	1,948	663	116	16
Mount Vernon Hospital	18,176	3,745	3,354	7,033	4,035	-	-	9
Community Hospital Dobbs Ferry	8,296	5,487	1,604	145	873	182	-	5
SVCMC-St. Vincent's Westchester <sup>2</sup>	964	412	276	217	58	1	-	-
New York Presbyterian Hospital <sup>2</sup>	573	256	165	127	21	4	-	-
All Other Out-of-County Hospitals	29,028	17,706	4,175	2,358	3,664	866	226	33
2009								
<b>Total</b>	<b>319,618</b>	<b>41,274</b>	<b>5,752</b>	<b>56,431</b>	<b>55,361</b>	<b>158,990</b>	<b>250</b>	<b>1,560</b>
St. Joseph's Hospital	35,163	7,496	346	3,696	17,332	6,267	26	-
Westchester Medical Center	32,386	2,893	641	3,762	3,857	20,518	-	715
St. John's Riverside Hospital	32,280	4,655	724	5,273	1,833	19,602	46	147
White Plains Hospital Center	31,972	3,590	697	7,067	1,449	19,169	-	-
Sound Shore Medical Center	31,544	4,726	317	6,598	10,450	9,415	38	-
Lawrence Hospital Center	28,743	2,683	539	5,744	815	18,961	1	-
Hudson Valley Hospital Center	27,008	3,435	364	5,388	4,923	12,898	-	-
Northern Westchester Hospital	21,902	1,342	266	4,480	430	15,384	-	-
Phelps Memorial Hospital	21,389	2,029	629	5,629	3,585	9,053	19	445
Mount Vernon Hospital	18,369	3,699	111	2,932	7,707	3,875	45	-
Community Hospital Dobbs Ferry	8,140	736	197	1,490	169	5,531	11	6
SVCMC-St. Vincent's Westchester <sup>2</sup>	978	65	-	261	225	427	-	-
New York Presbyterian Hospital <sup>2</sup>	391	13	-	99	73	205	1	-
All Other Out-of-County Hospitals	29,314	3,904	921	4,010	2,504	17,665	63	247

<sup>1</sup> Totals include unidentified hospitals.

<sup>2</sup> These hospitals do not have a physical emergency department but do have a 24 hour referral service.

Source: New York State Department of Health, Statewide Planning and Research Cooperative System (SPARCS). Data as of June 2010.

**Table 8. Number of Emergency Room Visits by Major Diagnosis Category and Sex, Westchester County Residents, 2008-2009**

	2008			2009		
	Total <sup>1</sup>	Male	Female	Total	Male	Female
<b>Total</b>	<b>310,713</b>	<b>146,862</b>	<b>163,844</b>	<b>319,618</b>	<b>149,147</b>	<b>170,471</b>
Injuries and Poisonings	80,545	43,606	36,937	79,171	42,107	37,064
Diseases of the Respiratory System	35,236	16,024	19,212	41,505	18,849	22,656
General Symptoms	28,595	11,801	16,794	29,703	12,096	17,607
Diseases of the Cardiovascular System	28,180	13,582	14,597	27,509	13,109	14,400
Diseases of the Digestive System	24,996	11,433	13,563	24,642	11,175	13,467
Diseases of the Musculoskeletal & Nervous Systems	20,624	8,842	11,782	20,445	8,739	11,706
Mental Disorders & Substance Abuse	16,372	9,314	7,058	16,564	9,553	7,011
Diseases of the Urogenital System	15,593	5,601	9,992	15,945	5,554	10,391
Infectious and Parasitic Diseases	10,840	5,048	5,792	13,391	6,239	7,152
Diseases of the Skin	13,339	6,673	6,665	13,169	6,358	6,811
Diseases of the Eye & Ear	9,799	4,729	5,069	9,997	4,816	5,181
Other Care	8,780	5,110	3,670	9,302	5,222	4,080
Childbirth and Reproductive Care	6,788	-	6,788	6,743	-	6,743
Metabolic, Nutritional, or Developmental Diseases	6,267	3,047	3,218	6,436	3,099	3,337
Neoplasms	2,336	1,060	1,276	2,427	1,117	1,310
Blood and Blood-Forming Organs	2,107	837	1,270	2,303	910	1,393
Conditions Originating in the Perinatal Period	316	155	161	366	204	162

<sup>1</sup> Total includes unknown sex.

Source: New York State Department of Health, Statewide Planning and Research Cooperative System (SPARCS). Data as of June 2010.

**Table 9. Number of Emergency Room Visits by Major Diagnosis Category and Age, Westchester County Residents, 2008-2009**

	2008										
	Total	<1	1-4	5-9	10-14	15-17	18-24	25-44	45-64	65-74	75+
<b>Total</b>	<b>310,713</b>	<b>7,819</b>	<b>21,083</b>	<b>14,866</b>	<b>14,613</b>	<b>11,752</b>	<b>29,834</b>	<b>79,628</b>	<b>69,832</b>	<b>20,986</b>	<b>40,300</b>
Injuries and Poisonings	80,545	716	5,582	5,235	7,015	5,129	8,475	20,272	16,458	3,993	7,670
Diseases of the Respiratory System	35,236	2,155	4,782	2,811	1,539	960	2,926	7,450	6,460	2,028	4,125
General Symptoms	28,595	1,176	2,305	1,383	1,145	958	2,663	6,971	6,263	2,033	3,698
Diseases of the Cardiovascular System	28,180	31	53	139	220	247	927	4,918	9,150	3,990	8,505
Diseases of the Digestive System	24,996	1,009	1,901	1,084	809	633	2,323	6,438	5,498	1,843	3,458
Diseases of the Musculoskeletal & Nervous Systems	20,624	45	265	340	586	472	1,473	6,789	6,695	1,493	2,466
Mental Disorders & Substance Abuse	16,372	17	22	191	872	1,150	2,271	5,733	4,762	699	655
Diseases of the Urogenital System	15,593	153	331	314	298	456	2,245	4,739	3,421	1,156	2,480
Diseases of the Skin	13,339	343	950	746	594	532	1,476	3,728	3,177	695	1,098
Infectious and Parasitic Diseases	10,840	566	1,473	892	465	268	827	1,847	1,635	752	2,115
Diseases of the Eye & Ear	9,799	749	2,439	1,141	497	251	758	1,907	1,409	294	354
Other Care	8,780	445	576	360	332	344	1,052	2,348	1,919	523	881
Childbirth and Reproductive Care	6,788	-	-	-	18	195	1,963	4,563	48	-	-
Metabolic, Nutritional, or Developmental Diseases	6,267	105	298	131	154	100	229	1,028	1,771	844	1,607
Neoplasms	2,336	4	19	11	11	11	39	261	788	466	726
Blood and Blood-Forming Organs	2,107	12	84	88	58	45	177	626	378	177	462
Conditions Originating in the Perinatal Period	316	293	3	-	-	1	10	10	-	-	-
	2009										
<b>Total</b>	<b>319,617</b>	<b>7,904</b>	<b>23,629</b>	<b>17,122</b>	<b>16,416</b>	<b>12,654</b>	<b>32,049</b>	<b>78,832</b>	<b>70,726</b>	<b>21,131</b>	<b>39,154</b>
Injuries and Poisonings	79,170	687	5,730	5,090	6,963	5,082	8,437	19,138	16,444	4,167	7,432
Diseases of the Respiratory System	41,505	2,375	5,930	3,994	2,653	1,462	4,062	8,366	6,844	2,017	3,802
General Symptoms	29,703	1,059	2,465	1,679	1,442	1,013	2,804	7,081	6,440	1,956	3,764
Diseases of the Cardiovascular System	27,509	12	65	155	197	257	963	4,701	8,874	4,045	8,240
Diseases of the Digestive System	24,642	884	1,925	1,251	832	636	2,366	6,048	5,593	1,829	3,278
Diseases of the Musculoskeletal & Nervous Systems	20,445	39	251	375	607	487	1,639	6,456	6,708	1,528	2,355
Mental Disorders & Substance Abuse	16,564	14	20	210	865	1,190	2,328	5,682	4,917	695	643
Diseases of the Urogenital System	15,945	158	375	351	320	509	2,363	4,761	3,433	1,131	2,544
Infectious and Parasitic Diseases	13,391	673	2,045	1,411	823	456	1,126	2,096	1,889	787	2,085
Diseases of the Skin	13,169	332	1,009	706	565	522	1,536	3,645	3,137	677	1,040
Diseases of the Eye & Ear	9,997	709	2,676	1,205	519	277	793	1,872	1,369	272	305
Other Care	9,302	461	684	444	381	384	1,146	2,404	1,927	534	937
Childbirth and Reproductive Care	6,743	-	-	-	13	191	2,012	4,489	37	1	-
Metabolic, Nutritional, or Developmental Diseases	6,436	107	359	154	136	128	271	1,012	1,874	850	1,545
Neoplasms	2,427	2	20	13	13	11	44	312	831	464	717
Blood and Blood-Forming Organs	2,303	31	73	84	87	49	158	767	409	178	467
Conditions Originating in the Perinatal Period	366	361	2	-	-	-	1	2	-	-	-

Source: New York State Department of Health, Statewide Planning and Research Cooperative System (SPARCS). Data as of June 2010.

**Table 10. Number of Emergency Room Visits by Major Diagnosis, Age and Sex, Westchester County Residents, 2008-2009**

2008											
	Males										
	Total	<1	1-4	5-9	10-14	15-17	18-24	25-44	45-64	65-74	75+
<b>Total<sup>1</sup></b>	<b>146,862</b>	<b>4,293</b>	<b>11,629</b>	<b>8,295</b>	<b>8,321</b>	<b>6,169</b>	<b>13,187</b>	<b>35,794</b>	<b>33,652</b>	<b>9,773</b>	<b>15,749</b>
Injuries and Poisonings	43,606	376	3,211	3,122	4,421	3,355	5,270	11,508	7,970	1,676	2,697
Diseases of the Respiratory System	16,024	1,255	2,718	1,556	797	432	1,155	2,883	2,610	916	1,702
Diseases of the Cardiovascular System	13,582	17	27	72	119	135	462	2,466	4,838	2,006	3,440
General Symptoms	11,801	615	1,229	738	539	371	891	2,501	2,621	930	1,366
Diseases of the Digestive System	11,433	544	1,035	578	445	286	996	2,924	2,544	814	1,267
Mental Disorders & Substance Abuse	9,314	15	15	150	448	549	1,299	3,421	2,787	396	234
Diseases of the Musculoskeletal & Nervous Systems	8,842	20	154	178	310	229	622	2,926	2,956	612	835
Diseases of the Skin	6,673	188	500	404	317	277	714	1,880	1,647	330	416
Diseases of the Urogenital System	5,601	88	148	108	113	65	326	1,241	1,641	663	1,208
Other Care	5,110	241	311	212	201	193	637	1,495	1,147	282	391
Infectious and Parasitic Diseases	5,048	319	767	473	244	107	296	810	794	334	904
Diseases of the Eye & Ear	4,729	398	1,294	602	260	103	308	886	635	108	135
Metabolic, Nutritional, or Developmental Diseases	3,047	56	159	50	72	47	89	585	971	394	624
Neoplasms	1,060	1	12	5	8	3	26	77	349	238	341
Blood and Blood-Forming Organs	837	8	46	47	27	17	96	191	142	74	189
Conditions Originating in the Perinatal Period	155	152	3	-	-	-	-	-	-	-	-
2008											
	Females										
	Total	<1	1-4	5-9	10-14	15-17	18-24	25-44	45-64	65-74	75+
<b>Total<sup>1</sup></b>	<b>163,844</b>	<b>3,525</b>	<b>9,454</b>	<b>6,571</b>	<b>6,292</b>	<b>5,583</b>	<b>16,646</b>	<b>43,833</b>	<b>36,178</b>	<b>11,213</b>	<b>24,549</b>
Injuries and Poisonings	36,937	340	2,371	2,113	2,594	1,774	3,204	8,763	8,488	2,317	4,973
Diseases of the Respiratory System	19,212	900	2,064	1,255	742	528	1,771	4,567	3,850	1,112	2,423
General Symptoms	16,794	561	1,076	645	606	587	1,772	4,470	3,642	1,103	2,332
Diseases of the Cardiovascular System	14,597	14	26	67	101	112	465	2,452	4,311	1,984	5,065
Diseases of the Digestive System	13,563	465	866	506	364	347	1,327	3,514	2,954	1,029	2,191
Diseases of the Musculoskeletal & Nervous Systems	11,782	25	111	162	276	243	851	3,863	3,739	881	1,631
Diseases of the Urogenital System	9,992	65	183	206	185	391	1,919	3,498	1,780	493	1,272
Mental Disorders & Substance Abuse	7,058	2	7	41	424	601	972	2,312	1,975	303	421
Childbirth and Reproductive Care	6,787	-	-	-	18	195	1,963	4,563	48	-	-
Diseases of the Skin	6,665	154	450	342	277	255	762	1,848	1,530	365	682
Infectious and Parasitic Diseases	5,792	247	706	419	221	161	531	1,037	841	418	1,211
Diseases of the Eye & Ear	5,069	351	1,145	539	237	148	450	1,021	773	186	219
Other Care	3,670	204	265	148	131	151	415	853	772	241	490
Metabolic, Nutritional, or Developmental Diseases	3,218	49	139	81	82	53	140	443	800	450	981
Neoplasms	1,276	3	7	6	3	8	13	184	439	228	385
Blood and Blood-Forming Organs	1,270	4	38	41	31	28	81	435	236	103	273
Conditions Originating in the Perinatal Period	162	141	-	-	-	1	10	10	-	-	-

*continued*

**Table 10. Number of Emergency Room Visits by Major Diagnosis Category and Hospital, Westchester County Residents, 2008-2009 (continued)**

2009											
	Males										
	Total	<1	1-4	5-9	10-14	15-17	18-24	25-44	45-64	65-74	75+
<b>Total</b>	<b>149,147</b>	<b>4,460</b>	<b>13,014</b>	<b>9,448</b>	<b>9,040</b>	<b>6,475</b>	<b>13,902</b>	<b>34,368</b>	<b>33,376</b>	<b>9,942</b>	<b>15,122</b>
Injuries and Poisonings	42,107	384	3,327	2,997	4,243	3,256	5,141	10,673	7,789	1,744	2,553
Diseases of the Respiratory System	18,849	1,374	3,309	2,188	1,374	655	1,612	3,122	2,777	917	1,521
Diseases of the Cardiovascular System	13,109	8	38	79	117	130	484	2,244	4,607	2,114	3,288
General Symptoms	12,096	582	1,342	862	669	395	990	2,402	2,622	828	1,404
Diseases of the Digestive System	11,175	501	1,005	680	452	272	938	2,698	2,558	856	1,215
Mental Disorders & Substance Abuse	9,553	14	10	154	448	574	1,339	3,450	2,913	400	251
Diseases of the Musculoskeletal & Nervous Systems	8,739	22	149	204	297	218	696	2,830	2,892	632	799
Diseases of the Skin	6,358	179	516	380	288	247	754	1,768	1,540	305	381
Infectious and Parasitic Diseases	6,239	374	1,073	724	439	195	424	850	888	388	884
Diseases of the Urogenital System	5,554	94	146	90	110	100	350	1,209	1,595	636	1,224
Other Care	5,222	260	405	287	214	211	663	1,436	1,064	280	402
Diseases of the Eye & Ear	4,816	395	1,470	670	273	126	288	784	602	107	101
Metabolic, Nutritional, or Developmental Diseases	3,099	60	171	80	69	71	107	547	1,010	403	581
Neoplasms	1,117	1	14	5	5	9	25	88	364	252	354
Blood and Blood-Forming Organs	910	9	38	48	42	16	91	267	155	80	164
Conditions Originating in the Perinatal Period	204	203	1	-	-	-	-	-	-	-	-
2009											
	Females										
	Total	<1	1-4	5-9	10-14	15-17	18-24	25-44	45-64	65-74	75+
<b>Total</b>	<b>170,470</b>	<b>3,444</b>	<b>10,615</b>	<b>7,674</b>	<b>7,376</b>	<b>6,179</b>	<b>18,147</b>	<b>44,464</b>	<b>37,350</b>	<b>11,189</b>	<b>24,032</b>
Injuries and Poisonings	37,063	303	2,403	2,093	2,720	1,826	3,296	8,465	8,655	2,423	4,879
Diseases of the Respiratory System	22,656	1,001	2,621	1,806	1,279	807	2,450	5,244	4,067	1,100	2,281
General Symptoms	17,607	477	1,123	817	773	618	1,814	4,679	3,818	1,128	2,360
Diseases of the Cardiovascular System	14,400	4	27	76	80	127	479	2,457	4,267	1,931	4,952
Diseases of the Digestive System	13,467	383	920	571	380	364	1,428	3,350	3,035	973	2,063
Diseases of the Musculoskeletal & Nervous Systems	11,706	17	102	171	310	269	943	3,626	3,816	896	1,556
Diseases of the Urogenital System	10,391	64	229	261	210	409	2,013	3,552	1,838	495	1,320
Infectious and Parasitic Diseases	7,152	299	972	687	384	261	702	1,246	1,001	399	1,201
Mental Disorders & Substance Abuse	7,011	-	10	56	417	616	989	2,232	2,004	295	392
Diseases of the Skin	6,811	153	493	326	277	275	782	1,877	1,597	372	659
Childbirth and Reproductive Care	6,743	-	-	-	13	191	2,012	4,489	37	1	-
Diseases of the Eye & Ear	5,181	314	1,206	535	246	151	505	1,088	767	165	204
Other Care	4,080	201	279	157	167	173	483	968	863	254	535
Metabolic, Nutritional, or Developmental Diseases	3,337	47	188	74	67	57	164	465	864	447	964
Blood and Blood-Forming Organs	1,393	22	35	36	45	33	67	500	254	98	303
Neoplasms	1,310	1	6	8	8	2	19	224	467	212	363
Conditions Originating in the Perinatal Period	162	158	1	-	-	-	1	2	-	-	-

<sup>1</sup> Totals do not include unknown sex or age.

Source: New York State Department of Health, Statewide Planning and Research Cooperative System (SPARCS). Data as of June 2010.

**Table 11. Number of Emergency Room Visits by Major Diagnosis Category and Race/Ethnicity, Westchester County Residents, 2008-2009**

	2008					2009				
	Total	White	Black	Other <sup>1</sup>	Hispanic <sup>2</sup>	Total	White	Black	Other <sup>1</sup>	Hispanic <sup>2</sup>
<b>Total</b>	<b>310,713</b>	<b>167,241</b>	<b>74,659</b>	<b>68,813</b>	<b>65,839</b>	<b>319,618</b>	<b>168,857</b>	<b>78,869</b>	<b>71,892</b>	<b>74,448</b>
Injuries and Poisonings	80,545	48,179	15,701	16,665	14,917	79,171	47,292	15,928	15,951	15,294
Diseases of the Respiratory System	35,236	16,434	10,260	8,542	9,176	41,505	18,824	11,680	11,001	12,773
General Symptoms	28,595	15,410	6,606	6,579	6,946	29,703	15,716	7,128	6,859	7,806
Diseases of the Cardiovascular System	28,180	17,439	6,371	4,370	3,435	27,509	16,892	6,435	4,182	3,552
Diseases of the Digestive System	24,996	13,506	5,629	5,861	5,992	24,642	12,855	6,005	5,782	6,300
Diseases of the Musculoskeletal & Nervous Systems	20,624	10,662	5,847	4,115	3,843	20,445	10,601	5,783	4,061	4,046
Mental Disorders & Substance Abuse	16,372	8,069	4,119	4,184	2,965	16,564	8,098	4,262	4,204	3,267
Diseases of the Urogenital System	15,593	8,404	3,672	3,517	3,599	15,945	8,436	3,893	3,616	3,993
Infectious and Parasitic Diseases	10,840	5,465	2,656	2,719	2,698	13,391	6,106	3,318	3,967	4,105
Diseases of the Skin	13,339	6,804	3,591	2,944	3,058	13,169	6,667	3,633	2,869	3,083
Diseases of the Eye & Ear	9,799	4,194	2,501	3,104	3,366	9,997	4,107	2,708	3,182	3,719
Other Care	8,780	4,120	2,372	2,288	2,078	9,302	4,494	2,563	2,245	2,227
Childbirth and Reproductive Care	6,788	2,463	2,174	2,151	2,287	6,743	2,528	2,027	2,188	2,537
Metabolic, Nutritional, or Developmental Diseases	6,267	3,441	1,780	1,046	918	6,436	3,601	1,792	1,043	1,024
Neoplasms	2,336	1,547	456	333	234	2,427	1,513	564	350	294
Blood and Blood-Forming Organs	2,107	967	864	276	224	2,303	949	1,075	279	290
Conditions Originating in the Perinatal Period	316	137	60	119	103	366	178	75	113	138

<sup>1</sup> Includes Native Americans, Asian, Pacific Islanders, Other and unknown race.

<sup>2</sup> Hispanic is an ethnic group and may be of any race. Therefore, Hispanics are also reported in the race categories.

Source: New York State Department of Health, Statewide Planning and Research Cooperative System (SPARCS). Data as of June 2010.



**Table 12. Number of Emergency Room Visits by Major Diagnosis Category, Race/Ethnicity and Age, Westchester County Residents, 2008-2009**

	2008										
	Total	<1	1-4	5-9	10-14	15-17	18-24	25-44	45-64	65-74	75+
<b>White</b>	<b>167,241</b>	<b>3,282</b>	<b>9,078</b>	<b>6,767</b>	<b>7,415</b>	<b>5,764</b>	<b>12,791</b>	<b>35,889</b>	<b>39,678</b>	<b>13,846</b>	<b>32,731</b>
Injuries and Poisonings	48,179	334	2,966	2,991	4,237	2,881	4,266	10,503	10,484	2,906	6,611
Diseases of the Cardiovascular System	17,439	11	22	59	103	125	390	2,169	5,120	2,566	6,874
Diseases of the Respiratory System	16,434	916	1,860	989	560	365	1,119	2,921	3,061	1,272	3,371
General Symptoms	15,410	512	1,029	657	574	487	1,177	3,183	3,514	1,318	2,959
Diseases of the Digestive System	13,506	433	774	470	385	306	973	2,861	3,326	1,225	2,753
Diseases of the Musculoskeletal & Nervous Systems	10,662	24	127	160	281	248	635	2,932	3,424	893	1,938
Diseases of the Urogenital System	8,404	67	143	148	149	203	811	2,022	2,061	805	1,995
Mental Disorders & Substance Abuse	8,069	3	10	39	267	452	1,047	2,601	2,709	437	504
Diseases of the Skin	6,804	137	373	298	251	238	636	1,674	1,817	459	921
Infectious and Parasitic Diseases	5,465	214	502	273	193	125	318	779	846	525	1,690
Diseases of the Eye & Ear	4,194	275	846	443	176	89	313	790	770	186	306
Other Care	4,120	176	222	130	115	129	353	951	1,018	335	691
Metabolic, Nutritional, or Developmental Diseases	3,441	48	153	67	77	60	100	464	845	463	1,164
Childbirth and Reproductive Care	2,463	-	-	-	5	36	574	1,821	27	-	-
Neoplasms	1,547	-	12	4	7	4	22	129	461	332	576
Blood and Blood-Forming Organs	967	3	37	39	35	15	52	89	195	124	378
Conditions Originating in the Perinatal Period	137	129	2	-	-	1	5	-	-	-	-
<b>Black</b>	<b>74,659</b>	<b>1,778</b>	<b>4,434</b>	<b>3,439</b>	<b>3,451</b>	<b>3,038</b>	<b>9,030</b>	<b>22,968</b>	<b>18,027</b>	<b>4,123</b>	<b>4,371</b>
Injuries and Poisonings	15,701	147	947	968	1,328	1,192	2,047	4,674	3,276	611	511
Diseases of the Respiratory System	10,260	518	1,181	871	531	330	1,056	2,669	2,253	430	421
General Symptoms	6,606	251	452	279	252	209	809	1,956	1,577	396	425
Diseases of the Cardiovascular System	6,371	4	15	45	60	69	306	1,616	2,452	833	971
Diseases of the Musculoskeletal & Nervous Systems	5,847	9	67	61	141	108	449	2,147	2,128	406	331
Diseases of the Digestive System	5,629	215	371	228	177	154	702	1,838	1,166	350	428
Mental Disorders & Substance Abuse	4,119	2	8	78	267	302	491	1,514	1,247	137	73
Diseases of the Urogenital System	3,672	29	56	70	78	122	831	1,315	711	172	288
Diseases of the Skin	3,591	90	248	217	165	159	478	1,172	842	131	89
Infectious and Parasitic Diseases	2,656	126	344	220	123	60	288	601	501	142	251
Diseases of the Eye & Ear	2,501	177	553	245	154	80	238	593	375	57	29
Other Care	2,372	127	130	103	113	108	362	691	533	103	102
Childbirth and Reproductive Care	2,174	-	-	-	4	97	792	1,276	5	-	-
Metabolic, Nutritional, or Developmental Diseases	1,780	21	38	28	47	22	76	356	636	256	300
Blood and Blood-Forming Organs	864	3	19	22	11	21	101	470	122	37	58
Neoplasms	456	1	4	4	-	5	4	79	203	62	94
Conditions Originating in the Perinatal Period	60	58	1	-	-	-	-	1	-	-	-

*continued*

**Table 12. Number of Emergency Room Visits by Major Diagnosis Category, Race/Ethnicity and Age, Westchester County Residents, 2008-2009 (continued)**

	2008										
	Total	<1	1-4	5-9	10-14	15-17	18-24	25-44	45-64	65-74	75+
<b>Other</b>	<b>68,813</b>	<b>2,759</b>	<b>7,571</b>	<b>4,660</b>	<b>3,747</b>	<b>2,950</b>	<b>8,013</b>	<b>20,771</b>	<b>12,127</b>	<b>3,017</b>	<b>3,198</b>
Injuries and Poisonings	16,665	235	1,669	1,276	1,450	1,056	2,162	5,095	2,698	476	548
Diseases of the Respiratory System	8,542	721	1,741	951	448	265	751	1,860	1,146	326	333
General Symptoms	6,579	413	824	447	319	262	677	1,832	1,172	319	314
Diseases of the Digestive System	5,861	361	756	386	247	173	648	1,739	1,006	268	277
Diseases of the Cardiovascular System	4,370	16	16	35	57	53	231	1,133	1,578	591	660
Mental Disorders & Substance Abuse	4,184	12	4	74	338	396	733	1,618	806	125	78
Diseases of the Musculoskeletal & Nervous Systems	4,115	12	71	119	164	116	389	1,710	1,143	194	197
Diseases of the Urogenital System	3,517	57	132	96	71	131	603	1,402	649	179	197
Diseases of the Eye & Ear	3,104	297	1,040	453	167	82	207	524	264	51	19
Diseases of the Skin	2,944	116	329	231	178	135	362	882	518	105	88
Infectious and Parasitic Diseases	2,719	226	627	399	149	83	221	467	288	85	174
Other Care	2,288	142	224	127	104	107	337	706	368	85	88
Childbirth and Reproductive Care	2,151	1	-	-	9	62	597	1,466	16	-	-
Metabolic, Nutritional, or Developmental Diseases	1,046	36	107	36	30	18	53	208	290	125	143
Neoplasms	333	3	3	3	4	2	13	53	124	72	56
Blood and Blood-Forming Organs	276	6	28	27	12	9	24	67	61	16	26
Conditions Originating in the Perinatal Period	119	105	-	-	-	-	5	9	-	-	-
<b>Hispanic</b>	<b>65,839</b>	<b>3,455</b>	<b>8,711</b>	<b>4,943</b>	<b>3,661</b>	<b>2,741</b>	<b>8,029</b>	<b>20,168</b>	<b>10,272</b>	<b>2,131</b>	<b>1,728</b>
Injuries and Poisonings	14,917	230	1,612	1,194	1,294	954	2,089	4,874	2,086	308	276
Diseases of the Respiratory System	9,176	959	2,036	1,092	557	274	807	1,921	1,078	245	207
General Symptoms	6,946	586	1,092	531	347	268	758	1,891	1,043	254	176
Diseases of the Digestive System	5,992	463	955	462	287	189	667	1,684	907	226	152
Diseases of the Musculoskeletal & Nervous Systems	3,843	21	75	110	157	117	377	1,645	1,047	163	131
Diseases of the Urogenital System	3,599	74	182	126	88	150	621	1,494	597	151	116
Diseases of the Cardiovascular System	3,435	18	20	39	52	62	218	1,065	1,271	356	334
Diseases of the Eye & Ear	3,366	380	1,225	544	173	70	198	500	222	32	22
Diseases of the Skin	3,058	157	409	245	217	167	392	871	484	76	40
Mental Disorders & Substance Abuse	2,965	10	3	32	171	191	514	1,336	595	80	33
Infectious and Parasitic Diseases	2,698	282	735	401	155	83	219	447	245	55	76
Childbirth and Reproductive Care	2,287	-	-	-	10	73	753	1,433	18	-	-
Other Care	2,078	141	241	116	99	102	322	660	303	49	45
Metabolic, Nutritional, or Developmental Diseases	918	39	97	30	33	32	51	220	248	86	82
Neoplasms	234	-	5	-	4	3	12	65	81	36	28
Blood and Blood-Forming Organs	224	5	22	21	17	6	26	56	47	14	10
Conditions Originating in the Perinatal Period	103	90	2	-	-	-	5	6	-	-	-

*continued*

**Table 12. Number of Emergency Room Visits by Major Diagnosis Category, Race/Ethnicity and Age, Westchester County Residents, 2008-2009 (continued)**

	2009										
	Total	<1	1-4	5-9	10-14	15-17	18-24	25-44	45-64	65-74	75+
<b>White</b>	<b>168,856</b>	<b>3,218</b>	<b>9,985</b>	<b>7,540</b>	<b>8,071</b>	<b>6,099</b>	<b>14,016</b>	<b>35,544</b>	<b>39,173</b>	<b>13,752</b>	<b>31,458</b>
Injuries and Poisonings	47,291	319	3,003	2,950	4,269	2,825	4,333	9,926	10,331	2,981	6,354
Diseases of the Respiratory System	18,824	955	2,317	1,452	962	589	1,598	3,283	3,343	1,284	3,041
Diseases of the Cardiovascular System	16,892	5	24	68	95	122	438	2,059	4,793	2,594	6,694
General Symptoms	15,716	467	1,083	744	710	492	1,276	3,276	3,546	1,217	2,905
Diseases of the Digestive System	12,855	354	718	496	381	288	1,007	2,677	3,152	1,197	2,585
Diseases of the Musculoskeletal & Nervous Systems	10,601	17	127	187	289	243	755	2,943	3,343	889	1,808
Diseases of the Urogenital System	8,436	64	174	158	153	209	922	1,988	1,957	787	2,024
Mental Disorders & Substance Abuse	8,098	3	9	60	260	464	1,094	2,588	2,667	448	505
Diseases of the Skin	6,667	129	379	276	235	235	644	1,623	1,800	476	870
Infectious and Parasitic Diseases	6,106	238	637	442	274	183	432	816	971	530	1,583
Other Care	4,494	183	294	152	126	171	441	1,047	1,025	334	721
Diseases of the Eye & Ear	4,107	251	964	428	196	115	306	773	690	148	236
Metabolic, Nutritional, or Developmental Diseases	3,601	54	198	89	78	79	147	466	869	443	1,178
Childbirth and Reproductive Care	2,528	-	-	-	2	50	566	1,893	16	1	-
Neoplasms	1,513	2	15	9	6	9	18	99	472	306	577
Blood and Blood-Forming Organs	949	1	42	29	35	25	39	86	198	117	377
Conditions Originating in the Perinatal Period	178	176	1	-	-	-	-	1	-	-	-
<b>Black</b>	<b>78,869</b>	<b>1,921</b>	<b>5,264</b>	<b>3,852</b>	<b>3,911</b>	<b>3,317</b>	<b>9,740</b>	<b>22,908</b>	<b>19,157</b>	<b>4,326</b>	<b>4,473</b>
Injuries and Poisonings	15,928	160	1,028	939	1,332	1,213	2,107	4,545	3,471	627	506
Diseases of the Respiratory System	11,680	560	1,422	1,102	810	451	1,367	2,859	2,280	420	409
General Symptoms	7,128	249	550	383	348	251	809	1,902	1,674	423	539
Diseases of the Cardiovascular System	6,435	4	13	38	48	87	297	1,571	2,561	914	902
Diseases of the Digestive System	6,005	247	434	273	161	148	769	1,759	1,435	367	412
Diseases of the Musculoskeletal & Nervous Systems	5,783	11	68	67	166	112	489	1,962	2,170	388	350
Mental Disorders & Substance Abuse	4,262	6	1	72	253	314	514	1,517	1,377	134	74
Diseases of the Urogenital System	3,893	28	62	70	68	160	850	1,387	766	177	325
Diseases of the Skin	3,633	100	291	181	155	146	525	1,167	842	130	96
Infectious and Parasitic Diseases	3,318	159	471	308	211	130	374	677	543	149	296
Diseases of the Eye & Ear	2,708	165	663	244	151	80	284	619	403	62	37
Other Care	2,563	123	196	122	132	114	398	707	536	103	132
Childbirth and Reproductive Care	2,027	-	-	-	4	80	772	1,164	7	-	-
Metabolic, Nutritional, or Developmental Diseases	1,792	22	48	24	37	16	70	327	708	286	254
Blood and Blood-Forming Organs	1,075	14	15	27	29	14	103	613	161	40	59
Neoplasms	564	-	1	2	6	1	11	132	223	106	82
Conditions Originating in the Perinatal Period	75	73	1	-	-	-	1	-	-	-	-

*continued*

**Table 12. Number of Emergency Room Visits by Major Diagnosis Category, Race/Ethnicity and Age, Westchester County Residents, 2008-2009 (continued)**

	2009										
	Total	<1	1-4	5-9	10-14	15-17	18-24	25-44	45-64	65-74	75+
<b>Other</b>	<b>71,892</b>	<b>2,765</b>	<b>8,380</b>	<b>5,730</b>	<b>4,434</b>	<b>3,238</b>	<b>8,293</b>	<b>20,380</b>	<b>12,396</b>	<b>3,053</b>	<b>3,223</b>
Injuries and Poisonings	15,951	208	1,699	1,201	1,362	1,044	1,997	4,667	2,642	559	572
Diseases of the Respiratory System	11,001	860	2,191	1,440	881	422	1,097	2,224	1,221	313	352
General Symptoms	6,859	343	832	552	384	270	719	1,903	1,220	316	320
Diseases of the Digestive System	5,782	283	773	482	290	200	590	1,612	1,006	265	281
Mental Disorders & Substance Abuse	4,204	5	10	78	352	412	720	1,577	873	113	64
Diseases of the Cardiovascular System	4,182	3	28	49	54	48	228	1,071	1,520	537	644
Diseases of the Musculoskeletal & Nervous Systems	4,061	11	56	121	152	132	395	1,551	1,195	251	197
Infectious and Parasitic Diseases	3,967	276	937	661	338	143	320	603	375	108	206
Diseases of the Urogenital System	3,616	66	139	123	99	140	591	1,386	710	167	195
Diseases of the Eye & Ear	3,182	293	1,049	533	172	82	203	480	276	62	32
Diseases of the Skin	2,869	103	339	249	175	141	367	855	495	71	74
Other Care	2,245	155	194	170	123	99	307	650	366	97	84
Childbirth and Reproductive Care	2,188	-	-	-	7	61	674	1,432	14	-	-
Metabolic, Nutritional, or Developmental Diseases	1,043	31	113	41	21	33	54	219	297	121	113
Neoplasms	350	-	4	2	1	1	15	81	136	52	58
Blood and Blood-Forming Organs	279	16	16	28	23	10	16	68	50	21	31
Conditions Originating in the Perinatal Period	113	112	-	-	-	-	-	1	-	-	-
<b>Hispanic</b>	<b>74,448</b>	<b>3,510</b>	<b>10,054</b>	<b>6,670</b>	<b>4,802</b>	<b>3,182</b>	<b>9,129</b>	<b>21,395</b>	<b>11,384</b>	<b>2,278</b>	<b>2,044</b>
Injuries and Poisonings	15,294	222	1,696	1,267	1,401	984	2,109	4,650	2,277	376	312
Diseases of the Respiratory System	12,773	1,110	2,703	1,798	1,078	511	1,300	2,490	1,297	248	238
General Symptoms	7,806	504	1,167	711	486	297	817	2,144	1,194	238	248
Diseases of the Digestive System	6,300	357	982	553	345	204	708	1,735	1,015	213	188
Infectious and Parasitic Diseases	4,105	341	1,052	740	380	135	325	594	355	93	90
Diseases of the Musculoskeletal & Nervous Systems	4,046	11	77	118	158	126	431	1,678	1,091	211	145
Diseases of the Urogenital System	3,993	84	195	162	115	159	729	1,568	709	136	136
Diseases of the Eye & Ear	3,719	376	1,357	668	218	84	229	481	236	48	22
Diseases of the Cardiovascular System	3,552	4	24	53	61	55	256	1,093	1,259	364	383
Mental Disorders & Substance Abuse	3,267	5	7	44	162	237	542	1,433	729	75	33
Diseases of the Skin	3,083	134	413	300	200	152	414	892	459	68	51
Childbirth and Reproductive Care	2,537	-	-	-	7	81	830	1,606	12	1	-
Other Care	2,227	174	247	174	138	103	339	637	291	68	56
Metabolic, Nutritional, or Developmental Diseases	1,024	38	114	49	26	32	69	239	276	90	91
Neoplasms	294	-	3	4	2	2	11	82	124	36	30
Blood and Blood-Forming Organs	290	13	17	29	25	20	20	72	60	13	21
Conditions Originating in the Perinatal Period	138	137	-	-	-	-	-	1	-	-	-

Source: New York State Department of Health, Statewide Planning and Research Cooperative System (SPARCS). Data as of June 2010.

**Table 13. Number of Emergency Room Visits by Major Diagnosis Category and Payer, Westchester County Residents, 2008-2009**

2008								
	Total	Private Insurance	Medicare	Medicaid	Self Pay	Worker's Compensation	Other Programs	Federal Programs
<b>Total</b>	<b>310,713</b>	<b>156,552</b>	<b>58,713</b>	<b>46,092</b>	<b>42,506</b>	<b>5,959</b>	<b>750</b>	<b>141</b>
Injuries and Poisonings	80,545	45,976	10,551	8,155	11,071	4,510	239	43
Diseases of the Respiratory System	35,236	17,680	6,003	7,015	4,453	36	26	23
General Symptoms	28,595	15,565	5,318	3,788	3,781	86	48	9
Diseases of the Cardiovascular System	28,180	12,549	10,781	2,460	2,253	68	55	14
Diseases of the Digestive System	24,996	12,652	4,947	3,746	3,586	36	21	8
Diseases of the Musculoskeletal & Nervous Systems	20,624	10,252	4,094	2,900	2,631	630	109	8
Mental Disorders & Substance Abuse	16,372	5,539	2,763	4,320	3,667	20	57	6
Diseases of the Urogenital System	15,593	7,670	3,304	2,187	2,399	17	10	6
Diseases of the Skin	13,339	6,958	1,870	2,270	2,117	100	21	3
Infectious and Parasitic Diseases	10,840	4,756	2,722	2,097	1,236	14	7	8
Diseases of the Eye & Ear	9,799	5,412	695	2,170	1,432	73	15	2
Other Care	8,780	3,443	1,479	1,698	1,702	351	103	4
Childbirth and Reproductive Care	6,788	3,513	64	1,764	1,408	11	22	6
Metabolic, Nutritional, or Developmental Diseases	6,267	2,527	2,332	866	526	5	10	1
Neoplasms	2,336	983	1,012	232	105	1	3	-
Blood and Blood-Forming Organs	2,107	903	778	310	112	1	3	-
Conditions Originating in the Perinatal Period	316	174	-	114	27	-	1	-
2009								
<b>Total</b>	<b>319,618</b>	<b>158,990</b>	<b>56,431</b>	<b>55,361</b>	<b>41,274</b>	<b>5,752</b>	<b>1,560</b>	<b>250</b>
Injuries and Poisonings	79,171	44,335	10,173	9,554	10,114	4,388	565	42
Diseases of the Respiratory System	41,505	21,077	5,696	9,602	5,023	33	39	35
General Symptoms	29,703	15,817	5,173	4,796	3,689	85	118	25
Diseases of the Cardiovascular System	27,509	12,157	10,356	2,615	2,219	53	101	8
Diseases of the Digestive System	24,642	12,025	4,700	4,499	3,309	32	56	21
Diseases of the Musculoskeletal & Nervous Systems	20,445	10,080	3,873	3,157	2,541	570	216	8
Mental Disorders & Substance Abuse	16,564	5,680	2,567	4,729	3,461	14	58	55
Diseases of the Urogenital System	15,945	7,518	3,299	2,572	2,483	11	54	8
Infectious and Parasitic Diseases	13,391	6,005	2,772	3,126	1,443	18	16	11
Diseases of the Skin	13,169	6,755	1,702	2,634	1,953	91	27	7
Diseases of the Eye & Ear	9,997	5,235	548	2,799	1,329	59	18	9
Other Care	9,302	3,781	1,478	1,868	1,569	383	215	8
Childbirth and Reproductive Care	6,743	3,556	73	1,693	1,352	8	51	10
Metabolic, Nutritional, or Developmental Diseases	6,436	2,762	2,263	860	527	5	16	3
Neoplasms	2,427	1,033	962	321	102	2	7	-
Blood and Blood-Forming Organs	2,303	965	796	406	133	-	3	-
Conditions Originating in the Perinatal Period	366	209	-	130	27	-	-	-

Source: New York State Department of Health, Statewide Planning and Research Cooperative System (SPARCS). Data as of June 2010.

**Table 14. Number of Emergency Room Visits by Major Diagnosis Category and Patient Disposition, Westchester County Residents, 2008-2009**

	2008			2009		
	Total	Out Patient	Inpatient	Total	Out Patient	Inpatient
<b>Total</b>	<b>310,713</b>	<b>239,676</b>	<b>71,037</b>	<b>319,618</b>	<b>249,057</b>	<b>70,561</b>
Injuries and Poisonings	80,545	73,824	6,721	79,171	72,566	6,605
Diseases of the Respiratory System	35,236	27,452	7,784	41,505	33,725	7,780
General Symptoms	28,595	25,214	3,381	29,703	26,210	3,493
Diseases of the Cardiovascular System	28,180	12,717	15,463	27,509	12,475	15,034
Diseases of the Digestive System	24,996	16,636	8,360	24,642	16,382	8,260
Diseases of the Musculoskeletal & Nervous Systems	20,624	17,339	3,285	20,445	17,116	3,329
Mental Disorders & Substance Abuse	16,372	10,180	6,192	16,564	10,376	6,188
Diseases of the Urogenital System	15,593	11,928	3,665	15,945	12,243	3,702
Infectious and Parasitic Diseases	10,840	6,697	4,143	13,391	9,216	4,175
Diseases of the Skin	13,339	11,347	1,992	13,169	11,212	1,957
Diseases of the Eye & Ear	9,799	9,466	333	9,997	9,669	328
Other Care	8,780	7,885	895	9,302	8,409	893
Childbirth and Reproductive Care	6,788	4,782	2,006	6,743	4,846	1,897
Metabolic, Nutritional, or Developmental Diseases	6,267	2,995	3,272	6,436	3,216	3,220
Neoplasms	2,336	270	2,066	2,427	323	2,104
Blood and Blood-Forming Organs	2,107	771	1,336	2,303	848	1,455
Conditions Originating in the Perinatal Period	316	173	143	366	225	141

Source: New York State Department of Health, Statewide Planning and Research Cooperative System (SPARCS). Data as of June 2010.

# Appendices





## **A1. The Statewide Planning and Research Cooperative System (SPARCS)**

Information on emergency room visits and hospitalizations comes from the Statewide Planning and Research Cooperative System (SPARCS) data for the years 2007 and 2008. SPARCS was implemented by the New York State Department of Health in 1979, with the cooperation and initial financial support of the U.S. Department of Health and Human Services. SPARCS receives, processes, stores, and analyzes inpatient hospitalization data from hospitals in New York State and outpatient data from hospitals with emergency departments, hospitals providing ambulatory surgery services, and all other facilities providing ambulatory surgery services.

To protect patient privacy, any personal identifiers are omitted from the SPARCS data set, such as patient names, individual medical record numbers, and detailed residence addresses. Data reported are the number of cases of diseases or conditions requiring emergency care and hospitalizations, rather than individual patients.

Due to the fact that the SPARCS data is continually being updated, the completeness of reporting by individual facilities varies over time. All SPARCS tables included in this data book reflect the information as of June 2009.

### **Emergency Room Visits**

Emergency Room Visits are defined as cases that received treatment from a hospital emergency department. Data are extracted from both the outpatient and the inpatient data files. From the outpatient data files, an emergency room visit is indicated when the record contains an emergency department ancillary revenue code of 045X. From the inpatient data files, an emergency room visit is indicated where the patient record contains an emergency department ancillary revenue code, where the patient is admitted to the facility upon recommendation of the facility's emergency room physician, or if the patient's admission type indicates that the patient required immediate medical intervention as a result of severe, life threatening, or potentially disabling conditions.

### **Principal Diagnosis and Other Diagnosis**

The principal diagnosis is the condition determined by the health care provider to have been chiefly responsible for the patient's visit to the emergency department or outpatient ambulatory surgery. Because it reflects clinical findings discovered during the patient's treatment, it may not necessarily have been the diagnosis which resulted in the greatest consumption of hospital resources, or the most life-threatening condition. It may also differ from the admitting diagnosis.

There are 14 additional diagnosis codes in the SPARCS discharge record. These additional codes describe the diagnoses that coexist at the time of admission or have developed subsequently, which affect the treatment received and/or length of stay. The diagnoses that are related to an earlier episode which have no bearing on the current hospital stay are not included.

## Classification of Neoplasms

According to the New York State Department of Health, neoplasm data is categorized by considering the principal diagnosis and other fourteen diagnoses in the SPARCS discharge record on the basis of metastatic nature of cancer. The intent was to develop a comprehensive categorization of all hospital discharges related to neoplasms. The procedure used to extract and categorize neoplasm-related records is as the following<sup>1</sup>:

1. Extract all records with any diagnosis field containing a three digit ICD-9 code prefix indicating a neoplasm (i.e. between 140 and 239) or Chemo/Radiation therapy encounter (V58).
2. If the principal diagnosis is associated with a primary site (140 through 194 or 200 through 208), the principal diagnosis identifies the primary site of cancer. If the principal diagnosis corresponds to a secondary or ill defined site (195 or 196 through 199), the other diagnosis fields are searched for a primary site. If one is found, that diagnosis identifies the primary site of cancer. If a primary site is not found, the principal diagnosis identifies the secondary site of cancer.
3. If the principal diagnosis does not correspond to a primary or a secondary site of cancer, the primary or the secondary site of cancer is identified through searching the other 14 diagnoses based on the same criteria stated at step 2.
4. If a primary or a secondary site of cancer is not identified by the above 3 steps, an other-than-malignant neoplasm (210 through 239) is identified by checking the principal diagnosis and the 14 other diagnoses.

## Classification of Injury

Injury is classified by considering both the principal diagnosis code, the 14 other diagnosis codes, and a separate variable of the external cause of injury, using the E-code supplement of the International Classification of Diseases, Ninth Revision. The priorities for recording the E-code categories are: a) principal diagnosis of an injury or poisoning; b) other diagnosis of an injury, poisoning, or adverse effect directly related to the principal diagnosis; and c) other diagnosis with an external cause. Only the first E-Code is recorded.

---

<sup>1</sup> Archived on the New York State Department Of Health web page at <https://commerce.health.state.ny.us/hpn/ctrldocs/sparcs/deriveneo.html>.

## A2. International Classification of Diseases, 9th Revision, Clinical Modification (ICD-9)

Disease Category	ICD-9 Codes
Childbirth and Reproductive Care	
Care Related to Reproduction	V22-V28
Complications of Pregnancy, Childbirth, and the Puerperium	630-679
Conditions Originating in the Perinatal Period	760-779
Diseases of the Blood and Blood-Forming Organs	280-289
Diseases of the Cardiovascular System	
Cerebrovascular Disease	430-438
Discomfort in Chest	786.5
Heart Failure	428
Hypertensive Disease	401-405
Ischemic Heart Disease	410-414
Other Diseases of the Cardiovascular System	
Cardiac Dysrhythmias	427
General Symptoms Involving the Circulatory System	758
Other Diseases of the Cardiovascular System	390-399, 415-426, 429, 439-459
Diseases of the Digestive System	
Diseases of the Oral Cavity	
Diseases of the Oral Cavity, Salivary Glands, and Jaw	520-529
Noninfectious Enteritis and Colitis	555-558
Other Diseases of the Digestive System	
Appendicitis	540-543
Constipation	564.0-564.09
Diseases of the Intestine and Peritoneum	560-563, 565-569
Disorders of the Esophagus, Stomach, and Duodenum	530-538
Gallstones	574
Hernia of the Abdominal Cavity	550-553
Other Diseases of the Digestive System	570-573, 575-579
Functional Digestive Disorders	564.1-564.9
Other Symptoms involving the Digestive System	787.1-787.8
Nausea, Vomiting, and Diarrhea	
Diarrhea	787.9
Nausea and Vomiting	787.0
Diseases of the Eye and Ear	
Other Diseases of the Eye and Ear	
Diseases of the Eye and Related Structures	360-379
Other Diseases of the Ear and Mastoid Process	380-381, 383-389
Suppurative Otitis Media	382
Diseases of the Musculoskeletal and Nervous Systems	
Arthropathies and Related Disorders	710-719
Disorders of the Back, Neck, or Spine	720-724
Other Diseases of the Musculoskeletal System	725-739
Other Diseases of the Nervous System	320-359
Diseases of the Respiratory System	
Acute Respiratory Infections	460-466
Asthma	493

Other Diseases of the Respiratory System	470-478, 490-492, 494-519, 786.0-786.4, 786.6-786.9
Pneumonia and Influenza	480-488
<hr/>	
Diseases of the Skin	
Infection of the Skin or Subcutaneous Tissue	680-686
Other Diseases of the Skin	
General Symptoms involving the Skin and Integumentary System	782
Inflammatory Conditions of the Skin or Subcutaneous Tissue	690-698
Other Diseases of the Skin and Subcutaneous Tissue	700-709
<hr/>	
Diseases of the Urogenital System	
Diseases of the Genital Organs or Female Breast	600-629
Other Diseases of the Urinary System	
Acute Renal Failure	584
Calculus of the Kidney and Ureter	592
Other Disorders of the Urinary System	580-583, 585-591, 593-598, 599.1-599.9
Symptoms involving the Urinary System	788
Urinary Tract Infection	559.0
<hr/>	
General Symptoms	
Abdominal Pain	789.0
Blackout or Collapse	780.2
Fever	780.6
Headache	784.0
Other General Symptoms	
Bloody Nose	784.7
Convulsions	780.3
Dizziness	780.4
General Symptoms involving Nervous and Musculoskeletal Systems	781
Other General Symptoms	780.0-780.1, 780.5, 780.7-780.9, 784.1-784.6, 784.8-784.9, 789.1- 789.9,
<hr/>	
Infectious and Parasitic Diseases	001-139
<hr/>	
Injuries and Poisonings	
Complications of Medical Care	996-999
Injuries	
Burns	940-949
Contusions	920-929
Fractures	800-829
Open Wounds	870-897, 910-919
Other Injuries	850-869, 900-909, 930-939, 950-959, 990-995
Sprains, Strains, and Dislocations	830-848
Poisonings	960-989
<hr/>	
Mental Disorders and Substance Abuse	
Abuse of Drugs or Alcohol	291-292, 303-305
Mental Disorders	
Anxiety States	300.0
Mood Disorders	296,311
Other Mental Disorders	290, 293-294, 297-302, 306-310, 312-319

Schizophrenic Disorders	295
Metabolic, Nutritional, or Developmental Diseases	
Diabetes Mellitus	250
Other Metabolic, Nutritional, or Developmental Diseases	
Disorders of the Immune System	279
Other Metabolic, Nutritional, or Developmental Diseases	240-249, 251-278, 783
Neoplasms	140-239
Other Care	
Medical Procedure or Aftercare	V50-V69
Screenings, Exams, or Routine Care	
Routine Infant Care or Care Related to Development	V20-V21, V29-V39
Screenings and Exams	V70-V82
Other Disorders	
Abnormal or Unknown Conditions	790-799
Congenital Anomalies	740-759
Other	V40-V49, V83-V86, V88-V89
Persons with Potential Health Hazards	V01-V19, V87

### A3. Westchester County Municipalities

Health Planning Region and Municipality <sup>1</sup>	Code <sup>2</sup>
<b>Northwest</b>	
Cortlandt Town	T
Buchanan Village	V
Croton-on-Hudson Village	V
Cortlandt Unincorporated	TOV
Mount Pleasant Town	T
Briarcliff Manor Village (Mount Pleasant Part) <sup>2</sup>	V
Pleasantville Village	V
Sleepy Hollow Village	V
Mount Pleasant Unincorporated	TOV
Ossining Town	T
Briarcliff Manor Village (Ossining Part) <sup>2</sup>	V
Ossining Village	V
Ossining Unincorporated	TOV
Peekskill	C
<b>Northeast</b>	
Bedford Town	T
Lewisboro Town	T
Mount Kisco Town/Village	T/V
New Castle Town	T
North Castle Town	T
North Salem Town	T
Pound Ridge Town	T
Somers Town	T
Yorktown Town	T
<b>West Central</b>	
Greenburgh Town	T
Ardsley Village	V
Dobbs Ferry Village	V
Elmsford Village	V
Hastings-on-Hudson Village	V
Irvington Village	V
Tarrytown Village	V
Greenburgh Unincorporated	TOV
Scarsdale Town/Village	T/V
White Plains	C

Health Planning Region and Municipality <sup>1</sup>	Code <sup>2</sup>
<b>East Central</b>	
Harrison Town/Village	T/V
Mamaroneck Town	T
Larchmont Village	V
Mamaroneck Village (Mamaroneck Part) <sup>3</sup>	V
Mamaroneck Unincorporated	TOV
Rye City	C
Rye Town	T
Mamaroneck Village (Rye Part) <sup>3</sup>	V
Port Chester Village	V
Rye Brook Village	V
<b>Southwest</b>	
Yonkers	C
<b>Southeast</b>	
Eastchester Town	T
Bronxville Village	V
Tuckahoe Village	V
Eastchester Unincorporated	TOV
Mount Vernon	C
New Rochelle	C
Pelham Town	T
Pelham Village	V
Pelham Manor Village	V

<sup>1</sup> For regional planning purposes, municipalities are grouped into six geographic health planning regions.

<sup>2</sup> A town may or may not include incorporated villages located within the town boundary. When it does not include any incorporated villages within the town boundary, the statistics refer to the town as a whole (T). When it does include incorporated villages within its boundary, the statistics refer to the unincorporated area within the town boundary (TOV). The entities of Harrison, Mount Kisco, and Scarsdale are both towns and villages (V/T). The land in two towns, Pelham and Rye, has all been incorporated into separated villages. Therefore, no data are reported for these two towns.

<sup>3</sup> The Village of Briarcliff Manor and the Village of Mamaroneck are split between two towns. Briarcliff Manor is within the Town of Ossining (92% of its surface area and 91% of its population) and the Town of Mount Pleasant (8% of its surface area and 9% of its population). The Village of Mamaroneck is within the Town of Mamaroneck (63% of its surface area and 60% of its population) and the Town of Rye (37% of its surface area and 40% of its population).

A4. Health Planning Regions and Municipality Map

